



Suppliers of cutting edge seed from
market leading plant breeders

CATALOGUE

CONTENTS

FORAGE CROPS

TURNIPS	3
GRASS	4-5
MAIZE	6
BET	7
KALE	8
RAPE	8

GAME COVER

CROP INFORMATION	9
CROPS	10
KALE	11
MAIZE	11
LATE COVER & RESCUE MIXTURES	12
LONGER TERM CROPS	12
BRASSICA	13
SORGHUM	13
MILLETS	14
MIXTURES	14

BIOGAS

MAIZE	15
-------	----

GREEN MANURING

CROP INFORMATION	16
GREEN MANURING MIXTURES	17
GREEN MANURING CROPS	18

WILD BIRD SEED

WILD BIRD SEED MIXTURES	19
BUFFER STRIP MIXTURES	20
HERBS AND LEGUMES	20
LEGUME AND HERB RICH MIXTURES	21
NECTAR RICH MIXTURES	21
WILD BIRD FEED	24

STEWARDSHIP SELECTOR

STEWARDSHIP SELECTOR	22-23
----------------------	-------

HIGH IMPACT & WILD FLOWERS

COLOUR BOOST	25
PRO FLORA	26

EQUINE / AMENITY MIXTURES

HORSE PADDOCKS	27
LAWNS AND LANDSCAPING	27
AMENITY SEED	28

GAME & POULTRY REARING EQUIPMENT

FEEDERS	29
DRINKERS	30
OTHER PRODUCTS	30

MERCHANDISE

RC CROPS HATS, HOODIE, POLO, SEELAND JACKET	31
---------------------------------------------	----

WELCOME TO RC CROPS

Here at RC we pride ourselves in supplying our farmers with the *finest* seed available on the market.

As a seed supplier we understand how important it is to growers to make sure that their crop choice maximizes expectations whether it is for forage, biogas or for sporting cover crops.

MEET THE TEAM



RICHARD CROFTS

Director



LIZZY CROFTS

Director

FORAGE CROPS

THE FINEST FORAGE HYBRID CROPS AVAILABLE

RC Crops has picked the finest forage hybrid crops available to suit each farmer's individual requirements taking into consideration soil type, ground temperature and optimum harvest period. We supply varying varieties of maize and other crops maximising yield and feeding quality to farms all over the UK. We believe in high yield and increased nutrition, turning seed in to feed.

TURNIPS

Stubble Turnips are a fast growing catch crop, popular with livestock farmers. They may be sown after first cut silage for summer grazing or after winter cereals for autumn usage. When planting a large acreage it is advisable to stagger sowing dates, increasing the seed rate in dry conditions.

If being used for dairy cow grazing it is important to take into consideration the distance between the field and the milking parlour. Strip grazing is advisable if possible to limit wastage.

There are two types of stubble turnip: Bulbing (see Marco and Vollaenda) and Non-Bulbing (see Tyfon and Jupiter).

RAPID ROOT MIXTURE

(SAM2)

The forage rape element of this mixture ensures quick establishment and high protein yields, whilst the stubble turnips provide energy and stockholding capacity. The mixture is ideal for fattening stock and will provide grazing from July through to December.

Sowing Rate: 6-8.5kg Per Hectare

Characteristics / Quality:

- Treatment: Untreated
- Sow Mid April - Mid September

% Cultivar Species: 65% Forage Rape, 30% Stubble Turnip, 5% Kale

WINTER GRAZE

(SAM2)

A mixture of palatable, proven varieties ideal for sowing after winter cereals. The mixture is suitable for post Christmas grazing as it exhibits very good winter hardiness, which is improved by the addition of kale.

Sowing Rate: 6-8.5kg Per Hectare

Characteristics / Quality:

- Treatment: Untreated
- Sow Mid July - Mid September

% Cultivar Species: 60% Stubble Turnip, 35% Forage Rape, 5% Kale

MAIN CROP TURNIPS



GREEN GLOBE

Later maturing than stubble turnips and with higher dry matter, higher yields and better winter hardiness. They have a growing period of 12 - 15 weeks and provide excellent autumn and early winter feed for sheep and cattle. Green Globe turnips produce soft, easily eaten roots that are well anchored into the ground, suitable for grazing by all types of stock. They will provide a very high fresh yield from large bulbs and are utilised between October and January, preferably strip grazed to reduce waste.

Sowing Rate: 2.5-3.5kg Per Hectare

Characteristics / Quality:

- Treatment: Untreated
- Sow Late May to July
- Total Dry Matter Yield (%) - (5.7t/ha) 100, Total Fresh Yield (%) - (70.6 t/ha) 100, Matter (%) 8.2.
- Powdery Mildew Resistance 4(9=Best), Shape 6 (9=Best)

NON-BULBING



JUPITER LEAFY TURNIP

Sowing Rate: 5-7.5kg/ha

Jupiter is a very leafy turnip that is late flowering, covers the soil very fast and is winter hardy. This variety can be sown in spring or autumn and for forage production these leafy turnips can be grazed after just 6-8 weeks.

Characteristics / Quality:

- Seed Treatment - Untreated



TYFON

A leafy, fast growing cross between Chinese cabbage and stubble turnip. It exhibits high frost resistance and can be utilised within eight to ten weeks after sowing. There is potential for regrowth.

Sowing Rate: 5-7kg/ha

Characteristics / Quality:

- Treatment: Untreated
- Sow April - Mid Sept

BULBING



MARCO

Marco is a fast establishing, high yielding, large bulb and high bulb to leaf ratio. An early maturing turnip, only 55-65 days from sowing to grazing, with excellent bolting resistance and high club root resistance. Marco is a tetraploid turnip with high metabolisable energy and digestibility.

Sowing Rate: 5-7.5kg/ha

Characteristics / Quality:

- Treatment: Untreated (Limited)



VOLLEND (TETRAPLOID)

A large leafed, highly digestible variety with good early vigour and good disease resistance. It retains its palatability throughout the season, and is noted for its yield, speed of growth and bolting resistance.

Sowing Rate: 5-7.5kg/ha

Characteristics / Quality:

- Treatment: Untreated
- Sow April - Mid Sept



GRASS

PLEASE NOTE: mixtures are subject to change slightly.

When you deal with seed from us, you have science on your side. Research and development are at the heart of our supplier's business. Based on trends, needs and wants of the marketplace our worldwide research and breeding network develop new and better performing varieties to be used in mixtures for a wide range of purposes and climatic conditions. We can help you with seeds for just about any grass user or set of environmental circumstances.

CUTTING MIXTURES



CUTMAX SPRINTER

(1 Year)

A 1 year intensive cutting mixture to provide high yielding swards. Sown in the spring, Westerwold will provide at least two cuts in its harvest year.

Sowing Rate: 14-16kg Per Acre (35-40kg/ha)

Characteristics / Quality:

- Sprinter produces rapid growth and high yields
- Frost free sites are essential for autumn sown crops as Westerwold is not noted for winter hardiness
- Rapid regrowth after cutting
- Responds to high inputs of fertiliser
- Good resistance to mildew and rhynchosporium

% Cultivar Species:

50% Westerwold Ryegrass (T), 50% Italian Ryegrass



CUTMAX CATCH CROP

(1-2 Years)

Up to 2 years of intensive cutting based on a 100% Italian ryegrass blend. This mixture will respond very quickly to the application of fertiliser to the aftermath.

Sowing Rate: 14-16kg Per Acre (35-40kg/ha)

Characteristics / Quality:

- A versatile short term mixture
- Can be sown in spring or autumn including after maize
- Provides a good early crop to cut or graze
- Excellent levels of disease resistance
- Ensiles well due to high levels of sugar

% Cultivar Species:

50% - Italian Ryegrass, 50% - Italian Ryegrass (T)



CUTMAX EXTRA CUT

(3 Years)

An intensive cutting mixture for high yields of palatable forage for up to 3 years.

Sowing Rate: 13-15kg Per Acre (32-37kg/ha)

Characteristics / Quality:

- Benefits from Ryegrass Plus™ persistency and quality
- High in sugar – essential for rapid fermentation
- Excellent forage quality
- Responds well to fertiliser
- Good regrowth after cutting
- 12% Red Clover option available

% Cultivar Species: 20% Perseus Ryegrass PLUS™, 20% Fox Italian Ryegrass, 22% Hunter Italian Ryegrass (T), 14% Aston Crusader Hybrid Ryegrass (T), 24% Tetragraze Hybrid Ryegrass (T)



PROTEIN PLUS

(3 - 4 Years)

Protein Plus is the ultimate mixture for yield and forage quality. The added benefits attributed to Ryegrass PLUS™ varieties, such as stress tolerance and their increased persistence over Hybrids and Italians, make this a very cost effective option.

Sowing Rate: 14kg Per Acre (35kg/ha)

Characteristics / Quality:

- Ryegrass Plus™ inclusion ensures high quality yields
- Stress tolerant species will thrive in all soil types
- On average 3.5t DM/ha more from Ryegrass Plus™
- High Red Clover % for excellent forage quality particularly protein content
- Contains a high yielding blend of three Red Clover varieties
- A multi-cut mixture of the highest quality
- Organic option available

% Cultivar Species:

30% Lofa - Hybrid Ryegrass Plus, 40% Perseus - Italian Ryegrass Plus, 10% Perun - Italian Ryegrass Plus, 20% Red Clover Blend



CUTMAX LONG TERM

A specialist long term cutting mixture designed to produce high yields of high-quality forage for five plus years.

Sowing Rate: 14-16kg Per Acre (35-40kg/ha)

Characteristics / Quality:

- 76% Tetraploid varieties for outstanding fermentation characteristics
- Excellent sward density
- Class leading dry matter yields and quality
- Outstanding disease resistance
- Season long production
- Organic option available- contains 12% cutting white clover blend

% Cultivar Species:

24% Agaska - Intermediate Perennial Ryegrass, 22% Nolwen - Intermediate Perennial Ryegrass (T), 30% Nashota - Late Perennial Ryegrass (T), 24% Thegn - Late Perennial Ryegrass (T)

OVERSEEDING & UNDERSOWING



GRASSMAX™ CUT

Sowing Rate: 10-14kg Per Acre (25kg/ha)

% Cultivar Species:

20% Lofa Hybrid Ryegrass PLUS™, 35% Tetragraze Hybrid Ryegrass (T), 35% Nolwen Intermediate Perennial Ryegrass (T), 10% Cutting White Clover Blend, (optional Red Clover)



GRASSMAX™ GRAZE

Sowing Rate: 10-14kg Per Acre (25kg/ha)

% Cultivar Species:

30% Nolwen Intermediate Perennial Ryegrass (T), 30% Thegn Late Perennial Ryegrass (T), 30% Hopi Late Perennial Ryegrass (T), 10% Grazing White Clover Blend



GRASSMAX™ PRONITRO

Sowing Rate: 10-14kg Per Acre (25kg/ha)

% Cultivar Species:

30% Diwan Intermediate Perennial Ryegrass (T), 30% Thegn Late Perennial Ryegrass (T), 30% Hopi Late Perennial Ryegrass (T), 10% Dublin Large White Clover



GRASSMAX™ DUAL PURPOSE

Sowing Rate: 10-14kg Per Acre (25kg/ha)

% Cultivar Species:

20% Tetragraze Hybrid Ryegrass (T), 35% Nolwen Intermediate Perennial Ryegrass (T), 35% Hopi Late Perennial Ryegrass (T), 10% Dual Purpose White Clover Blend

HERBAL LEYS



MIXED HERBS

A herbal rich ley contains a wide and diverse range of grasses, herbs, and clovers. They are a superb source of nutrient which enables optimal animal performance when it comes to meat or milk production. As well as the nutritional benefits, herbal rich leys can equally be as beneficial to the soil by helping to restore and build soil fertility and structure. This is down to the deep and fibrous rooting plants that are included in the mixture. Herbal rich leys are a viable alternative source of forage in modern-day livestock farming and can help to reduce input costs and improve soil health.

Sowing Rate: Variable

% Cultivar Species: 26% Sainfoin, 23% Sheeps Burnet, 20% Plantain, 15% Sheeps Parsley, 13% Chicory, 3% Yarrow



GRAZEMAX HERB & LEGUME

A species rich ley containing grasses, herbs and clovers. Superb source of nutrients which enables optimal animal performance for meat and milk production. Beneficial to the soil by helping to restore and build soil fertility and soil structure. Herbal leys are a viable alternative source of forage in modern day livestock production along with helping to reduce input costs and improving soil health.

Sowing Rate: 13-15kg/acre (32-37kg/ha)

% Cultivar Species: 17% Agaska Intermediate Perennial Ryegrass, 21% Bowie Late Perennial Ryegrass, 21% Zorqua Late Perennial Ryegrass, 16% Thegn Late Perennial Ryegrass (T), 16% Nashota Late Perennial Ryegrass (T), 1% Comer Timothy, 1.5% Ranger Plantain, 0.5% Sheeps Burnet, 2% Red Clover, 4% White Clover

HERBAL MAX GOLD

Sowing Rate: 12kg/acre (30kg/ha)

% Cultivar Species:

28% Late Perennial Ryegrass (T), 15% Intermediate Perennial Ryegrass, 15% Late Perennial Ryegrass, 12% Red Clover, 9% Ecotain, 8% Chicory, 7% Timothy, 6% White Clover

HERBAL MAX SILVER

Sowing Rate: 12kg/acre (30kg/ha)

% Cultivar Species:

70% Intermediate Perennial Ryegrass (T), 10% Red Clover, 6% White Clover, 6% Plantain, 6% Timothy, 2% Sheeps Burnet

DUAL PURPOSE MIXTURES



VERSAMAX FLEXICROP (3-5 Years)

Flexicrop delivers yield and quality for both cutting and grazing. The hybrid element provides quality leafy grass at cutting and combines with the persistency and density of the perennials for all round performance.
Sowing Rate: 13-15kg Per Acre (32-37kg/ha)

Characteristics / Quality:

- Lofa has excellent stress tolerance combined with yield and forage quality
 - Will cut or graze equally well producing high annual yields
 - Sward density is excellent so withstands heavy traffic
 - Fibre Energy varieties bring superb digestibility levels within a wider cutting window
 - Dual purpose White Clover performs well under both regimes
 - NO CLOVER OPTION IS AVAILABLE
- 14% Lofa Ryegrass PLUS™, 20% Tetragraze Hybrid Ryegrass (T), 14% Agaska - Intermediate Perennial Ryegrass, 15% Nolwen - Intermediate Perennial Ryegrass (T), 15% Toddington - Late Perennial Ryegrass, 17% Nashota Late Perennial Ryegrass (T), 5% Dual Purpose White Clover Blend



VERSAMAX ALL STOCK (5 Years+)

A versatile mixture to cut or graze. This ley will withstand heavy grazing by all classes of stock, particularly beef cattle and sheep. For ensiling it will produce good yields and quality.

Sowing Rate: 13-15kg Per Acre (32-37kg/ha)

Characteristics / Quality:

- Good early bite for grazing animals
 - Timothy tolerates cold wet soils
 - Capable of producing a quality cut of silage
 - 48% late perennial ensures a leafy, palatable sward
 - NO CLOVER OPTION IS AVAILABLE
- 24% Calvano - Intermediate Perennial Ryegrass, 24% Nolwen - Intermediate Perennial Ryegrass (T), 22% Toddington - Late Perennial Ryegrass, 22% Nashota - Late Perennial Ryegrass (T), 4% Comer Timothy, 4% Dual Purpose Clover Blend



VERSAMAX MEAT & MILK (5 Years+)

A dual purpose mixture for 5 years plus. Meat and Milk will produce grass of both quantity and quality for all livestock systems. It will suit all soil types across the UK.

Sowing Rate: 13-15kg Per Acre (32-37kg/ha)

Characteristics / Quality:

- A persistent mixture to cut or graze
 - All grasses are SRUC class 1 varieties
 - Timothy gives early bite and good yields in spring
 - 32% inclusion of FIBER ENERGY™ varieties means top quality digestibility and production from forage
 - Dual purpose clover blend brings versatility to the mixture for cutting or grazing
 - NO CLOVER OPTION IS AVAILABLE
- 20% Agaska - Intermediate Perennial Ryegrass, 20% Seagoe - Intermediate Perennial Ryegrass (T), 24% Wetherby - Late Perennial Ryegrass, 24% Nashota - Late Perennial Ryegrass (T), 6% Comer Timothy, 6% Dual Purpose Clover Blend



GRASSMAX INTENSIVE (5 Years+)

A specialist grazing mixture designed to maximise production from grazed forage. For maximum benefit a grazing height of around 8 - 10cm should be maintained. If the growth outstrips demand then ensiling the surplus should be considered.

Sowing Rate: 13-15kg Per Acre (32-37kg/ha)

Characteristics / Quality:

- 47% of FIBER ENERGY™ flexible grasses
 - Excellent conversion to meat and milk production
 - Designed to support intensive grazing based dairy systems
 - High diploid content for improved persistence and density
 - NO CLOVER OPTION IS AVAILABLE
- 15% Agaska - Intermediate Perennial Ryegrass, 20% Bowie - Late Perennial Ryegrass, 20% Zorgue Late Perennial Ryegrass, 16% Thegn - Late Perennial Ryegrass (T), 16% Nashota - Late Perennial Ryegrass (T), 3% Red Clover Blend, 6% Grazing White Clover Blend, 4% Ecotain Plantain



SUGARMAX ALL PURPOSE (5 - 7 years)

A medium term mixture based on FIBER ENERGY™ grasses with high sugar levels and digestible fibre which lead to improved palatability and animal intake.

Sowing Rate: 13-15kg Per Acre (32-37kg/ha)

Characteristics / Quality:

- Excellent palatability and animal intake
 - 68% FIBER ENERGY™ flexible grasses
 - High sugar content
 - Excellent clamp fermentation when cut
 - High dry matter yields throughout the grazing season
 - NO CLOVER OPTION IS AVAILABLE
- 12% Nifty Intermediate Perennial Ryegrass, 16% Agaska Intermediate Perennial Ryegrass, 20% Nolwen Intermediate Perennial Ryegrass (T), 15% Cancan Late Perennial Ryegrass, 15% Bowie Late Perennial Ryegrass, 16% Nashota Late Perennial Ryegrass (T), 6% Dual Purpose White Clover Blend



VERSAMAX PERMANENT PASTURE (Long Term)

Long term/permanent mixture with good Timothy percentage for early bite in colder conditions. Whilst this mixture is predominantly designed to graze, it is capable of providing a cut of silage or ideal for big bale silage or hay.

Sowing Rate: 13-15kg Per Acre (32-37kg/ha)

Characteristics / Quality:

- A proven, hard wearing long term mixture
 - Good early bite
 - Will tolerate hard sheep grazing
 - High diploid content for improved persistence and density
 - Excellent disease tolerance
 - NO CLOVER OPTION IS AVAILABLE
 - Organic option available
- 12% Nifty - Intermediate Perennial Ryegrass, 15% Agaska - Intermediate Perennial Ryegrass, 15% Nolwen - Intermediate Perennial Ryegrass (T), 15% Swan - Late Perennial Ryegrass, 14% Bowie - Late Perennial Ryegrass, 16% Nashota - Late Perennial Ryegrass (T), 7% Comer Timothy, 6% Dual Purpose White Clover Blend

SPECIALIST MIXTURES



HAYMAX SHORT TERM (2 Years)

Quality hay or haylage from diploid Italian Ryegrass and Ryegrass Plus™ varieties. This mixture will provide very heavy crops in terms of yield, and of a quality which is required for the equine fodder market.
Sowing Rate: 13-15kg Per Acre (32-37kg/ha)

Characteristics / Quality:

- Will provide at least two heavy crops per annum
 - Superb for hay or haylage
 - Diploids only to aid drying process
 - Excellent disease resistance
 - Very responsive to fertiliser inputs
- % Cultivar Species: 20% Sendero Italian Ryegrass, 35% Fox Italian Ryegrass, 45% Alamo Italian Ryegrass



HAYMAX FULL TERM (3 - 5 years)

Based only on diploid species and Timothy, providing high quality hay or haylage. A longer term mixture that will produce a finer hay than the HayMax short term mixture.

Sowing Rate: 13-15kg Per Acre (32-37kg/ha)

Characteristics / Quality:

- 5 years duration for hay and haylage
 - Timothy inclusion makes this very palatable
 - Good disease resistance
 - Diploids only for even conditioning
- % Cultivar Species: 30% Genesis Early Perennial Ryegrass, 24% Boyne Intermediate Perennial Ryegrass, 20% Nifty Intermediate Perennial Ryegrass, 14% Toddington Late Perennial Ryegrass, 12% Comer Timothy



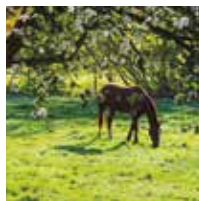
EXTREME DUAL PURPOSE (3 - 5 Years)

A mix of late perennial and Ryegrass Plus™ varieties for longer term dual purpose use. Around 60% of annual dry matter yield is produced by the end of June. This is a key consideration in areas where drought is a known issue. This mix contains varieties to ensure peace of mind that first cut will be substantial and of the highest nutritional quality. This mixture will tolerate extreme conditions from flooding to drought.

Sowing Rate: 13-15kg Per Acre (32-37kg/ha)

Characteristics / Quality:

- Deep rooting Ryegrass Plus™ grasses tolerate drought & high temps
 - Good yields at first cut with quick recovery
 - Excellent clovers to enhance palatability and quality
 - Will stand out in dry summers
 - Superb spring growth. Responds well to spring fertiliser input
 - NO CLOVER OPTION AVAILABLE
- % Cultivar Species: 5% Perun Italian Ryegrass PLUS™, 16% Perseus Italian Ryegrass PLUS™, 16% Lofa Hybrid Ryegrass PLUS™, 16% Hipast Tall Fescue PLUS™, 15% Nolwen Intermediate Perennial Ryegrass (T), 15% Donata Cocksfoot, 12% Tower Tall Fescue, 5% Dual Purpose White Clover Blend



HORSEMAX PADDOCK (5 years+)

Long term horse grazing with an option to produce a quality hay crop. HorseMax Paddock is designed using diploid Perennial Ryegrasses, Timothy and Creeping Red Fescue. Sward density is a key consideration as both grazing and winter feed are often produced from the same area. Timothy is favoured by horses and gives hay a sweet smell and is very palatable. Creeping Red Fescue binds the sward together and due to its growth habit quickly repairs the turf when damaged by hooves.

Sowing Rate: 13-15kg/acre (32-37kg/ha)

Characteristics / Quality:

- Varieties selected to reduce incidents of laminitis
 - An extremely versatile equine mixture
 - Very good sward density
 - Suitable for a hay crop if desired
 - Very hard wearing
- % Cultivar Species: 15% Calvano Intermediate Perennial Ryegrass, 30% Boyne Intermediate Perennial Ryegrass, 25% Toddington Late Perennial Ryegrass, 20% Maxima Creeping Red Fescue, 10% Comer Timothy



MEADOWMAX (Long Term)

A traditional ley of non-aggressive grass species. Suited to more extensive farming systems.

Sowing Rate: 13-15kg Per Acre (32-37kg/ha)

Characteristics / Quality:

- Will tolerate low fertiliser inputs and lower pH soils
- Can be grazed or cut for hay or haylage
- Suits extensive livestock management systems
- Tolerant of wet and cold conditions
- A very dense, hard wearing sward

% Cultivar Species: 20% Laura Meadow Fescue, 20% Maxima Creeping Red Fescue, 16% Comer Timothy, 17% Donata Cocksfoot, 17% Hipast Tall Fescue PLUS™, 10% Tower Tall Fescue



HERBAL MEADOW (GS4, SAM3)

Sowing Rate: 30kg/ha

% Cultivar Species:

27% Perennial Ryegrass, 20% Festulolium, 13% Cocksfoot, 10% SSMG, 7% Red Clover, 6% Sainfoin, 5% Timothy, 5% Lucerne (inoculated), 3% Alsike Clover, 1% Fenugreek, 1% Chicory, 0.7% Plantain, 0.5% Birdsfoot Trefoil, 0.5% Sheeps Burnet, 0.25% Yarrow, 0.05% Sheeps Parsley

ORGANIC MIXTURES

70% ORGANIC PROTEIN PLUS

70% ORGANIC CUTMAX LONG TERM

70% ORGANIC MEAT & MILK

70% ORGANIC PERMANENT PASTURE

MAIZE

Our expertise in the grass seed market complements the maize portfolio when discussing total forage needs with our customers. We are not breeders of maize so we work with breeders, which can have a distinct advantage when securing a well-rounded portfolio to suit all maize requirements.

EARLY / MAIN MAIZE



AUTENS KWS

Sowing Rate: 103-106k/Hectare

Characteristics / Quality:

- Stable yield performance (18.1t/ha DM) • Faster dry down with great standing power • High starch content (34.3%)
 - Outstanding early vigour (7.5) on all soil types
 - Excellent energy content (11.74 MJ/kg DM)
 - Provides an excellent early harvest option on lighter land
- "AUTENS KWS offers stable yield performance & high kernel content, for proven starch yield in favourable areas."*

EARLY: FAO 170



AURELIUS KWS

A new dynasty in maize growing!

Sowing Rate: 103-106k/Hectare

Characteristics / Quality:

- Consistent DM yield (101% DM yield) • Rapid early vigour (7.5)
 - Suitable for high maize inclusion in diets (60%+) due to balanced starch content (32.7%) • High energy content (11/67 MJ/kg DM) drives ration performance • Can help stagger harvest window for biogas
- "AURELIUS KWS is a consistent yield performer. Particularly suited to high maize inclusion in modern TMR rations. A highly flexible variety."*

EARLY: FAO 180



SEVERUS

Commanding Yields from KWS!

Sowing Rate: 103-106k/Hectare

Characteristics / Quality:

- Stable DM yield - across all NIAB trials (99%)
 - Outstanding early vigour on all soil types
 - Very high starch (35.1%) and ME content (11.51 MJ/Kg)
- "Severus has been the benchmark for UK variety suitability in the early segment and remains a popular choice amongst KWS hybrids."*

EARLY: FAO 170



KEOPS

Multi-use silage or biogas

Sowing Rate: 103-106k/Hectare

Characteristics / Quality:

- Significant yield potential on favourable sites (23.3t/ha DM)
 - Can be used to spread drilling • Wide harvest window due to stay green nature • Strong early vigour gets early sowing up and away • Seed at 103k/ha, in low rainfall areas 94k/ha to protect yield
- "KEOPS offers a wide drilling and harvest window for silage or AD in warmer areas."*

MAINCROP: FAO 210/220



KWS KAMPINOS

MAINCROP: FAO 200/210

Continental yields with cold tolerance...silage or AD use!

Sowing Rate: 103-106k/Hectare

Characteristics / Quality:

- Heavy yield potential on favourable sites (21.5t/ha DM)
 - Ideal hybrid for spreading drilling window • High grain:stover ratio for stable ripening • Excellent starch content for maturity (34.1%)
 - Significant energy density (11.63 MJ/Kg DM) for animal or AD performance
- "KWS KAMPINOS adds more options for AD and silage growers to fill clamps. Allows a wider drilling window/harvest in suitable conditions."*



DEBALTO

Push your starch yield, keep your harvest on track

Sowing Rate: 103-106k/Hectare

Characteristics / Quality:

- Strong yield performance (18.9t/ha DM) across all sites
 - High grain:stover ratio provides an energy dense silage
 - Starch content (34.2%) • Energy content (11.58 MJ/kg DM)
 - Suited for mod - high (50-70%) TMR dairy or beef finishing rations
 - Excellent vigour across all soil types (7.5)
- "DEBALTO offers leading starch yields, high grain density & lower ear insertion height."*

EARLY: FAO 170



PAPAGENO

EARLY/MAINCROP: FAO 190

Characteristics / Quality:

- Excellent dry matter yields - 21.1t/ha in 2021 DL
 - Starch (32.8%) exceptionally well balanced for the highest maize inclusion rates in a ration
 - Great energy (11.40 MJ/kg DM) content to drive animal performance
 - High early vigour (6.8) • Dual use in both forage and biogas
 - Ideal variety to aid the spread of drilling and harvest
- "PAPAGENO adds more options for AD or silage growers looking for a wider drilling window, and high yield performance."*



AGROLINO

A heavy hitter delivering a knockout punch!

Sowing Rate: 103-106k/Hectare

Characteristics / Quality:

- High yields (19.5 t/ha DM) ensures clamps are full
- Balanced starch content, ideal for high maize inclusion ruminant diets
- Very suited to favourable sites with a longer growing window
- High early vigour (7.0) widens the drilling options
- Provides harvest security with a wide harvest period, particularly in the AD segment

FAO 200



KWS EXELON

EARLY: FAO 170

Drive your silage output!

Sowing Rate: 103-106k/Hectare

Characteristics / Quality:

- Leading DM Yield (18.9t/ha) • Excellent starch content (34.6%)
 - Fantastic energy values produces superb silage (11.74MJ/kg DM)
 - Highly suited to moderate to high (50-70%) inclusion in dairy and finishing rations • Excellent vigour (7.1) on all soils
- "KWS EXELON has a lower ear insertion height resulting in greater stability. The potential to carry 20 grains per ring provides superb grain quality, leading to high starch yields. This is combined with excellent DM yield and maturity providing a complete variety."*



KWS ZIMO

Fill your silo - time after time

Sowing Rate: 103-106k/Hectare

Characteristics / Quality:

- High yields on favourable sites (19.1 t/ha DM)
- Balanced starch content (35%) is ideal for 50-70% maize diets
- High ME content (11.92 MJ/kg DM) fuels animal digester performance
- Excellent early vigour (7.5) provides a rapid establishment and promotes a longer growing season
- A highly flexible dual use variety for both forage & biogas systems

FAO 190



KWS TEMPRANO

EARLY: FAO 150

Always finishes on time!

Characteristics / Quality:

- Outstanding and class leading yield for an Ultra Early (19.4 t/ha DM)
- Improved genetics deliver an extra 6% yield, and super early
- Similar earliness to Cito KWS
- Exceptional starch content (38.9%)
- Highly suited for diets with 50% or lower maize inclusion
- Superb early vigour (7.4) suitable for early or late drilling
- Rapid dry down ensures early harvest



KWS ANASTASIO EARLY / MAINCROP: FAO 180/190

Maincrop silage and grain hybrid for every season

Sowing Rate: 103-106k/Hectare

Characteristics / Quality:

- High DM yields (106%) to fill your clamps, forage or biogas
 - Great starch content (32%) for high maize diets
 - High energy content (11.57 MJ/kg DM) to deliver ration performance
 - Highly suitable for CCM and grain cropping
 - Leading early vigour (7.4) on all soils types for a rapid establishment
 - Suitable for forage, grain and biogas systems
- "KWS ANASTASIO provides you with a high level of harvest flexibility, and is suited to forage, CCM, crimped or dried grain, and also biogas."*

ULTRA-EARLY



KROFT

Early Harvest...Early Feedout...

Sowing Rate: 103-106k/Hectare

Characteristics / Quality:

- Stable DM yield across NIAB trials (2011:103)
- Good early vigour for heavier soils or later drilling (2011:8.1)
- Excellent silage quality; Starch (2011:36.6%), ME content (2011:11.5 MJ/Kg)

"KROFT is a stable performer on challenging sites where early harvesting is a necessity."

Ultra Early: FAO 160



AUGUSTUS KWSV

A born leader!

Sowing Rate: 103-106k/Hectare

Characteristics / Quality:

- No.1 DM yield in its segment - (94%) across all marginal sites
- Rapid early vigour (7.1)
- Full cob sheath coverage
- Excellent starch (36.8 %) and ME content (11.78 MJ/Kg)

"More options for early feedout! AUGUSTUS KWS is an ideal choice for short season maize silage production."

Ultra Early: FAO 160

BEET

FODDER BEET YIELD AND FEED QUALITY

Average dry matter yield 17 - 22 tonnes/ha
 Average fresh yields 95 - 110 tonnes/ha
 Crude protein 12 - 13%
 Digestibility value 78D
 Dry matter 12 - 19%
 Metabolisable energy 12 - 12.5MJ/kg DM
 Sugars in DM 65%

Fodder Beet is grown as a main root crop, which requires similar husbandry to sugar beet. It can produce substantial yields of high quality fodder and is an excellent supplement to grass silage. The roots are very palatable to stock and have superb feed quality. Specialist harvesting equipment is required to lift the roots and storage is required unless they are strip grazed in situ. Medium dry matter varieties tend to have a higher percentage of root above ground and can be lifted with a top lifter and therefore have a relatively low dirt tare. These highly palatable roots can be fed whole to stock. High dry matter varieties tend to sit further in the ground and require a sugar beet harvester to lift them. Due to the higher dirt tare and hardness of the root, these varieties may need to be chopped and washed before feeding. After wilting, the tops may be fed to stock and can contribute a further yield of 3-4 tonnes of protein-rich dry matter per hectare.



DELICANTE

Delicante is a white skinned variety with good fresh and dry matter yields. Clean roots with healthy foliage which has good resistance to rust and mildew. Delicante is excellent for fresh feeding and grazing, with a good tolerance to bolting.

Characteristics / Quality:

- Seed Treatment - Force 10 & Pelleted Untreated seed (Limited)
- Sowing Rate: 50,000 seeds per acre



BANGOR

Bangor is an improvement on the illustrious/long-time acknowledged varieties Kyros and Troya – resulting in a yield increase and uniform roots. Bangor is easily lifted on all soil types, due to the regular shape of the root and its high position above the ground. With a medium DM in the root it results in a very high yield of 105%.

Characteristics / Quality:

- Seed Treatment - Force 10 & Pelleted Untreated seed (Limited)
- Sowing Rate: 50,000 seeds per acre



MAGNUM

Magnum has a consistent root size and reliable high dry matter yields. It is a very palatable variety therefore increasing appetite and dry matter intake in all stock. Higher dry matter fodder beet has been shown to increase milk yield and daily live weight gain. Due to its high dry matter content it is more frost resistant than other varieties with a high proportion of clean, white root in the ground.

Characteristics / Quality:

- Seed Treatment - Force 10 & Pelleted Untreated seed (Limited)
- Sowing Rate: 50,000 seeds per acre



JAMON

A very consistent variety producing a clean highly palatable orange root with average dry matter yields. It has good resistance to leaf disease and bolting. Jamon benefits from large top size and has 33% of its root above the ground which allows for easy lifting.

Characteristics / Quality:

- Seed Treatment - Force 10 & Pelleted Untreated seed (Limited)
- Sowing Rate: 50,000 seeds per acre



MONRO

An ideal variety for grazing with its low dry matter of 14.6%. It has exceptional high fresh yields from red roots that are mostly above ground.

Characteristics / Quality:

- Seed Treatment - Force 10 & Pelleted Untreated seed (Limited)
- Sowing Rate: 50,000 seeds per acre



ENERMAX

An exciting dual purpose variety for both fodder and bio-energy production. High yielding with a low dirt tare. Enermax has a clean, white, smooth-skinned root and is shallow rooting, resulting in a cleaner end product particularly important for the bio-fuel market.

Characteristics / Quality:

- Higher root yield compared with Magnum
- Produces 21t/DM/ha from root only, beet tops add approx 5t/DM/ha.
- Rhizomania tolerant
- Seed Treatment - Force 10 & Pelleted Untreated seed (Limited)
- Sowing Rate: 50,000 seeds per acre

Maize being harvested.



KALE

Kale is a brassica traditionally grown for grazing in the autumn and winter. It can also be cut and fed to stock 'in house' or as an alternative can be ensiled as big bale kaleage. Kale is very useful as it can extend the grazing season. This crop is best strip grazed to avoid excessive wastage and ensure both leaf and stem are eaten. It is advisable to stagger sowing dates to ensure it does not over-mature. It is very adaptable and can grow on most sites throughout the UK. Kale can also be used as game cover.



THOUSAND HEAD

A very high yielding variety with good winter hardiness and excellent A reliable and consistent variety. It's a medium height variety with good winter hardiness providing excellent yields.

Sowing Rate: 2.5-7.5kg/ha

Characteristics / Quality:

- Treatment: Untreated



ASTERA

A very productive and leafy variety, characterised by its high yields. It is a very winter hardy variety producing high crude protein yields.

Sowing Rate: 2.5-7.5kg/ha

Characteristics / Quality:

- Treatment: Untreated



PROTEOR

An excellent leafy variety with high leaf to stem ratio, therefore increasing palatability and stock utilisation. Proteor is a high yielding, medium height kale with winter hardiness and good disease resistance.

Sowing Rate: 2.5-7.5kg/ha

Characteristics / Quality:

- Treatment: Untreated



GRUNER ANGELITER

A very high yielding variety with good winter hardiness and excellent feeding quality with fresh yields 15% higher than Caledonian kale and 10% higher than Bittern in German trials. Gruner Angeliter has been the mainstay forage variety of kale in New Zealand for many years and since its introduction to the UK has become equally popular over here. Its high yields make it ideal for utilisation by dairy and beef cattle and as winter feed for sheep.

Sowing Rate: 3-7.5kg/ha

Characteristics / Quality:

- Treatment: Untreated

RAPE

Forage Rape has the advantage of being a very fast growing crop suitable for grazing by sheep or cattle. It is an ideal catch crop for boosting midsummer forage production for livestock farmers when planted in the spring, it is also suitable for fattening lambs in the autumn/winter. Forage rape extends the grazing season in the autumn and is superb for flushing ewes. It is better to strip graze to avoid excessive wastage. Forage Rape can be mixed with stubble turnips and kale to combine the many benefits of these crops. Stock should be introduced gradually over a two week period and an area of grassland should be available for animals to return to. Water and hay or straw should also be made available.

KALE YIELD AND FEED QUALITY

Average dry matter yield 3.5 - 4 tonnes/ha,

Digestibility value 65D,

Average fresh yields 24 - 35 tonnes/ha,

Dry matter 12 - 14%,

Crude protein 19 - 20% (mainly leaves),

Metabolisable energy 10 - 11 MJ/kg DM



MAINSTAR

Mainstar is a highly palatable modern early maturity rape with quality frost resistance and excellent regrowth potential after grazing. It is a very versatile brassica with extremely good aphid tolerance. The main strength of Mainstar is the early maturity leading to the potential for earlier grazing which will extend the grazing period for stock. Mainstar is suitable for a wide range of soil fertility and environmental conditions.

Sowing Rate: 6-10kg/ha

Characteristics / Quality:

- Treatment: Untreated



SPITFIRE

Spitfire is a modern hybrid rape created by crossing rape with kale and is a good companion to use with other fast establishing brassicas. It is a medium-tall variety with high dry matter yield, excellent aphid tolerance, good stock palatability and rapid establishment to maturity.

It also has very good regrowth potential but needs to be carefully managed to avoid damage to stems. Spitfire is a multi-purpose rape suitable for planting in spring for excellent summer and autumn feed or in early autumn for quality winter feed.

The main strengths of Spitfire are excellent yield, insect tolerance, and a low dry matter (DM%) stem. The very low DM% content of the stem produces high quality forage with good utilisation at grazing.

Sowing Rate: 6-10kg/ha

Characteristics / Quality:

- Treatment: Untreated



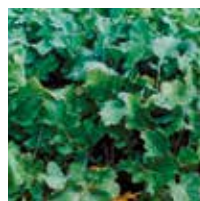
ZOOM

Zoom is a blend of Winfred hybrid brassica and forage rape. This is a very vigorous and quick growing mixture which is ideal for replacing failed crops or patching spring sown crops. High seedling vigour gives a reliable establishment of a high leaf to stem ratio crop with carefully selected varieties that have good disease and bolting resistance.

Sowing Rate: 6-10kg/ha

Characteristics / Quality:

- Treatment: Untreated



EMERALD

Emerald is a proven, well known variety producing rapidly establishing, medium to tall leafy plants maturing in 10-12 weeks after sowing. It is fast growing with average dry matter yields and good general disease resistance. Importantly, it has very good feeding quality, being high in protein and easily digestible, remaining palatable well into the winter. An added benefit is its widely branched root system for improvement of soil structure.

Sowing Rate: 6-10kg/ha

Characteristics / Quality:

- Treatment: Untreated

GAME COVER

YOUR SHOOTING SEASON IS OUR TOP PRIORITY

RC Crops offer a wide variety of Game Cover and understand the importance of good cover crops to drive game birds. We also as a company appreciate that every game keeper, shoot manager or estate owner have their own personal preference. RC works hard to make sure that our customers get the mixture or crop which will exceed expectations and deliver.

Our handy game cover guide is given in good faith and intended for general guidance only. Weather, local conditions and crop rotations must always be taken into account.

Crop	Pack size	Average sowing Rate per hectare		Sowing Date Guide	Utilisation Period	Duration of the Crop	Average Drill Depth	Average Row Width	Suggested Guide to Seed-bed Fertiliser (kg/ha)		
		Broadcast	Drill						N	P	K
Game Cover Crops											
Maize	40k/50k seeds		Precision drill 111,150 - 123,500 seeds/ha	April - June	September - February	1 Season	6	75	80	85	205
Brassic											
Kale	1kg & 5kg	5 - 7.5kg	3 - 5kg	April - June	September - March	1 - 2yr	1 - 2	50	100	50	120
Surefire Kale Blend	2kg	5 - 7.5kg	3 - 5kg	April - June	September - March	1 - 2yr	1 - 2	50	100	50	120
Leafy Turnip	10kg & 25kg	5 - 7.5kg	3 - 6kg	Spring / Early Autumn	Autumn / Early Winter	1 Season	1 - 2	Various	110	55	55
Brassica Carinata	5kg	5 - 7.5kg	6kg	April - August	September - January	1 Season	1 - 2	Various	110	55	55
Forage Rape	10kg & 25kg	10kg	6kg	May - end of September	July - Decemeber	1 Season	1 - 2.5	15 - 20	20	40	40
Spitfire Brassica	10kg & 25kg	10kg	6kg	May - end of September	July - Decemeber	1 Season	1 - 2.5	15-20	20	40	40
Zoom Brassica Mixture	5kg	6 - 10kg	6kg	Spring/Autumn	September - March	1 Season	1 - 2	Various	110	55	55
Millet / Grasses											
Sorghum - Intermediate & Dwarf	10kg		20kg	May - June	September - February	1 Season	2.5-4	45-50	100	50	120
Millet	10kg	12kg	12kg	April - June	September - December	1 Season	1- 1.5	35-45	60	30	30
Canary Grass (Phalaris aquatica)	2.5kg		6kg	April - June	All Year	5 Years+	1.5	70 - 90	55	28	28
Reed Canary Grass (Phalaris arundinacea)	2.5kg		6kg	April - June	All Year	5 Years+	1.5	70 - 90	55	28	28
Game Cover Crops											
Sunflowers	10kg & 25kg		12kg	April - June	July - November	1 Season	4	75	Ensure adequate P but very little N		
Quinoa	5kg & 25kg	5kg+	5kg	April - June	September - December	1 Season	1.5	45	100	50	120
Triticale	25kg		125kg	Spring/Autumn	August - February	1 Season	2.5	12-16	125	0	0
Borage	5kg & 25kg	12kg+	12kg	April - June	Autumn	1 Season	1-2	15-20			
Gold of Pleasure (Camelina)	5kg & 25kg	12kg+	12kg	April - May	September - December	1 Season	1	8-18	40	75	65
Phacelia	5kg, 10kg & 25kg	7.5 - 10kg		April - August	July - October	1 Season	1-2	Various			
Buckwheat	10kg & 25kg	50kg+	50kg	April - May	August - December	1 Season	1-2.5	20-35	35	105	210
White Mustard	10kg & 25kg	12 - 17kg	6 - 12kg	Spring/Autumn	August - December	1 Season	1-2.5	20-35			
Brown Mustard	5kg & 25kg	5 - 7.5kg	2.5 - 7.5kg	Spring/Autumn	Autumn / Spring	1 Season	1-2.5	20-35			
Fodder Radish	10kg & 25kg	8kg	6kg	Spring/Autumn	July - December	1 Season	1-2.5	25-35	40	15	20
Linseed	25kg		60kg	April - May	September - February	1 Season	1-2	8-18	40	75	65
Perennial Chicory	5kg & 25kg	5kg+	5kg	Spring / Early Autumn	All Year	5 Years+	1	15-20	100	50	120
Yellow Blossom Clover	2kg & 25kg	6kg+	6kg	April - June	All Year	1 - 2 Years	0.5	75	30	0	0
Game Cover Mixtures											
Feed and Cover Mixture	20kg		40kg	Spring	September - February	1 Season	1-2.5	12-16	30	75	75
Northern Star Game Mixture	20kg	50kg	50kg	Spring	September - February	1 Season	2.5-3	15	75	37	37
Overdrive	5kg	6kg+	6kg	April - June	September - February	1 - 2 Years	2.5	45-50	100	50	120
General Purpose Rearing Pen Mixture	20kg	32 - 37kg	32kg+	Spring/Autumn	All Year	5 Years+	1	15-20			
Broadshot	10kg	15kg	15kg	Spring	September - February	1 Season	1-2	15-25	80	40	96
Sundown Mixture	20kg		32kg	April - June	September - February	1 Season	5-6	75-100	60	60	
Traditional Game Cover Mixture	10kg	25kg	25kg	April - June	September - February	1 Season	B/C	B/C	80	40	96
Boost Mixture	10kg	6kg+	6kg	June - September	September - February	1 Season	1-2	45-50	100	50	50
Late Cover Mixture	10kg	15kg+	12kg	Spring/Autumn	September - February	1 Season	1-2	20-35	55	28	28
Kwik Fix	10kg	15kg+	12kg	July - End of September	September - December	1 Season	1-2	40	Lodging can occur with excessive fertiliser		
Rescue Mixture	10kg	12kg+	12kg	July - September	September - December	1 Season	1-2	45-50	100	50	50

CROPS

Sunflowers are a colourful sight and are of huge benefit to wildlife. Sunflowers provide highly nutritious seed of a high oil content which is loved by all game and song birds and the nectar is of great importance to bees and other insects.



GOLD OF PLEASURE - CAMELINA

Another crop well suited to poorer and nutrient deficient soils. It is a fast maturing, free-branching plant producing a seed very attractive to birds, especially partridge. A useful mixture for exposed areas is produced by combining gold of pleasure with triticale, barley and linseed.

Sowing Rate: 12kg/ha

Characteristics / Quality:

- Treatment: Untreated



WHITE MUSTARD

A relatively inexpensive and highly versatile cover crop either sown alone or as a companion to other species. It is ideal for early cover and although killed off by frost, the fallen woody stems will create shelter for the birds below. This is especially useful when sown with seed producing species which alone would provide no cover. Popular as a green manure crop.

Sowing Rate: 12kg/ha

Characteristics / Quality:

- Treatment: Untreated



PHACELIA

A prolific seeder, very fast to establish and a good weed suppressant. It produces a mass of sweet smelling purple flowers providing a good source of nectar, beneficial to a large variety of insects. It is not winter hardy and therefore for game cover it is best sown as part of a mixture. Phacelia is likely to set seed and reseed itself for many years to come.

Sowing Rate: 7.5-10kg/ha

Characteristics / Quality:

- Treatment: Untreated



QUINOA

Quinoa is capable of producing a plentiful amount of seed and therefore is a popular choice of crop for holding partridge and pheasant. Many species of seed-eating song-birds are also attracted to the crop. Commonly grown with kale, quinoa provides cover and feed until it begins to collapse in the first frosts with the kale providing more permanent cover.

Sowing Rate: 5kg/ha

Characteristics / Quality:

- Treatment: Untreated



SUNFLOWERS | STANDARD TYPE

Large attractive flowers of variable height, but generally tall. For best utilisation of this crop it should be "swiped down" to enable game birds to reach the nutritious seeds. They can be drilled with maize to brighten up your crop.

Sowing Rate: 12kg/ha

Characteristics / Quality:

- Treatment: Untreated



BROWN MUSTARD

A fast growing cover crop easy to establish 50 - 70 day crop that can be sown between April and September. Unlike white mustard, it is winter hardy. It will improve the health of the soil by increasing organic matter and acts as an excellent weed suppressant. It is also especially useful as over-wintering green cover after maize, potatoes and sugar beet crops, reducing soil erosion, fertiliser leaching and water run-off.

Sowing Rate: 2.55-7.5kg/ha

Characteristics / Quality:

- Treatment: Untreated



LINSEED

Traditionally grown for its oil, linseed has become popular in recent years as game cover and is particularly attractive to partridge. It is an easy to grow crop and is tolerant of many soil types, performing well on thinner soils e.g. Cotswold Brash. Although not frost hardy it will continue to provide cover and interest well into the winter especially if sown as part of a mixture. It is also another option where brassica sickness has been a problem.

Sowing Rate: 60kg/ha

Characteristics / Quality:

- Treatment: Untreated



BUCKWHEAT

A rapidly growing short term crop highly attractive to pheasants, partridge and deer both as cover and feed. The large amount of nectar produced attracts bees and other beneficial insects which in turn provide added interest for game birds. It is a useful component to add to mixtures due to its bulkiness and its ability to continue to provide holding cover and feed after the first frosts when the crop has fallen. Buckwheat thrives best in sunny rather than shaded areas.

Sowing Rate: 50kg/ha

Characteristics / Quality:

- Treatment: Untreated



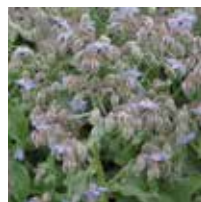
SUNFLOWERS | DWARF TYPE

A short hybrid variety with good standing ability. The seedheads tend to be larger than those of the standard type. These are also best "swiped down" to enable birds to reach the large seed-heads, providing plenty of nutritious seeds.

Sowing Rate: 12kg/ha

Characteristics / Quality:

- Seed Treatment: Fungicide Treated



BORAGE

Borage, also known as starflower, is a quick growing annual herb, to a height of 2-3 feet with bright blue flowers; there is also a white flowered variation. The crop was traditionally grown for culinary and medicinal uses, although the crop is commercially grown today for its oil content. Borage's star shaped flower attracts bees all summer long. Borage is a self seeding plant and likely to reseed itself for many years to come.

Sowing Rate: 12kg/ha

Characteristics / Quality:

- Treatment: Untreated



FODDER RADISH (OIL RADISH)

A fast growing cover crop, its prime usefulness being where brassica sickness is a problem due to its immunity to the disease. Other qualities are its speed of establishment which aids weed suppression and its use as a green manure crop. It is useful as a catch crop in northern regions if sown in July as it will be ready to provide cover within six to eight weeks, just as birds are losing cover from the cereals being combined. Due to its fast growth it is valuable as a replacement for failed crops, and will continue to provide cover right through the season. In addition, it holds its seed in pods which shed in late winter/early spring, thus providing feed during that all important 'hungry gap'.

Sowing Rate: 6-8kg/ha

Characteristics / Quality:

- Treatment: Untreated



TRITICALE

A wheat/rye hybrid cereal providing good cover and feed in marginal low fertility areas where it will thrive with little input. Useful in situations where maize and millet are not options and where brassica sickness is a problem. Further important advantages are its ability to withstand rabbit attack, winter hardiness and good disease resistance. When sowing in the spring, a true spring type must be used which does not require a period of vernalisation, otherwise the plant will not produce grain.

Sowing Rate: 125kg/ha

Characteristics / Quality:

- Treatment: Untreated

KALE

Kale is still one of the most popular cover crops used today. The main advantage of kale is that it will provide cover for the whole shooting season. Pheasants particularly like the combination of a good canopy and bare ground which allows easy movement in a relatively dry environment.



THOUSAND HEAD

A reliable and consistent variety. It's a medium height variety with good winter hardiness providing excellent yields.

Sowing Rate: 3-7.5kg/ha

Characteristics / Quality:

- Seed Treatment - Untreated (Limited)



ASTERA

A very productive and leafy variety, characterised by its high yields. It is a very winter hardy variety producing high crude protein yields.

Sowing Rate: 3-7.5kg/ha

Characteristics / Quality:

- Seed Treatment - Untreated (Limited)



OVERDRIVE (CLUB ROOT TOLERANT)

A superb combination of winter hardy cover provided by the kale and high quality feed provided by the quinoa. This mixture is excellent for holding birds.

Sowing Rate: 6kg/ha

Characteristics / Quality:

- Seed Treatment - Untreated
- Cultivar Species: 50% Quinoa, 50% Goldeneye Kale



GRUNER ANGELITER

A very high yielding variety with good winter hardiness and excellent feeding quality with fresh yields 15% higher than Caledonian kale and 10% higher than Bittern in German trials. Grüner Angeliter has been the mainstay forage variety of kale in New Zealand for many years and since its introduction to the UK has become equally popular over here. Its high yields make it ideal for utilisation by dairy and beef cattle and as winter feed for sheep.

Sowing Rate: 3-7.5kg/ha

Characteristics / Quality:

- Seed Treatment - Untreated



SUREFIRE KALE BLEND

A combination of three excellent game cover kale varieties, to provide a tall varied canopy. This blend will give superb cover over an extended period and will give second year growth with various bolting times. The flowering kale attracts insects and provides shed seed, all helping to draw both game and song birds.

Sowing Rate: 3-7.5kg/ha

Characteristics / Quality:

- Seed Treatment - Untreated
- Cultivar Species: 40% Goldeneye, 30% Grüner Angeliter, 30% Inka



GOLDENEYE KALE (CLUB ROOT TOLERANT)

Goldeneye is a giant type kale especially bred for the game cover market, selected for the optimum combination of height and leaf production. It has a leafy top, strong stem, good winter hardiness and good field tolerance of disease, making it the ideal choice for game cover usage. Goldeneye achieved a higher vigour score than Caledonian kale and better club root tolerance in a trial conducted at the Scottish Agricultural College in Aberdeen.

Sowing Rate: 3-7.5kg/ha

Characteristics / Quality:

- Seed Treatment - Untreated

MAIZE

Game Maize is still one of the most popular crops used for cover and feed values. All maize varieties used for cover crop have at some stage been commercial forage grain varieties. These varieties have been modified over years to come up with what we feel the best game maize on the market, working hard on early vigour and standing capability together with good feed value.



RC LATE SHOT

Late Shot is selected for very late maturity and good standing ability. It produces an immature cob that only develops to the 'bright white' stage under normal UK autumn and winter conditions. Due to the late cob formation it tends to be of less interest to rats and badgers that can decimate more mature cobbled varieties through the shooting season.

Sowing Rate: 1 Pack Per Acre

Characteristics / Quality:

- Good early vigour
- Good standing power, providing cover long term. Stands all season
- Almost Cobless
- Great value for money
- Treatment Fungicide & Bird Repellent treated



RC ALTITUDE

RC Altitude is a variety of Maize which has been developed for RC Crops exclusively and is the most popular crop used by our customers, it has the best attributes for both cover and feed value. This variety originated from commercial forage and grain production crops producing our first generation hybrid range which are in a league of their own.

Sowing Rate: 1 Pack Per Acre

Characteristics / Quality:

- Extremely good early vigour
- Excellent standing power, providing season long cover
- Fantastic cob fill giving added feed value
- Proven performance on even the most marginal of site
- Awarded an amazing standing rate of 9/10 therefore lengthening drives which depend on cover crop
- A proven winner on some of the UK's top shoots!
- Treatment: Mesuro treated



RC RAPID FIRE

RC Rapid Fire is a variety of Maize which has been developed for RC Crops exclusively and is a good allrounder. More affordable than RC Altitude it has been a popular choice amongst estates up and down the country. It has proven cover, feed value and grows even on marginal sites.

Sowing Rate: 1 Pack Per Acre

Characteristics / Quality:

- Good early vigour
- Good standing power, providing cover long term
- Brilliant cob fill giving added feed value
- Awarded a good standing rate of 8/10
- A favourite affordable good all rounder
- Treatment: Mesuro treated

Don't hesitate to contact us for more information or advice from an expert. We're here to help!

+44 (0) 7947 954 614 enquiries@rccrops.co.uk

www.rccrops.co.uk

LONGER TERM CROPS

Perennial game cover crops provide valuable year round habitat for game and farmland wildlife. They help reduce workload during busy periods and reduce establishment costs.



GREEN FENNEL

Sowing Rate: 6-8kg/ha

A perennial plant which provides excellent cover for both pheasant and partridge, its distinctive smell makes it highly attractive to both. When sown alongside other species it can create an excellent cover crop.

Characteristics / Quality:

- Seed Treatment - Untreated



YELLOW BLOSSOM CLOVER

Sowing Rate: 6kg/ha

A biennial plant which can persist for several years due to its self-regenerating properties. Owing to its sweet smell and copious production of nectar it is highly attractive to insects, which in turn attract game birds and wildlife. Sowing with kale will help to provide cover in the first year, with the tall, woody-stemmed clover taking over in the second year. Yellow Blossom Clover can thrive in the poorest of soils and being leguminous and deep rooting it is invaluable for improving soil structure and fertility.

Characteristics / Quality:

- Seed Treatment - Untreated



REED CANARY GRASS (PHALARIS ARUNDINACEA)

Sowing Rate: 6kg/ha

Reed Canary Grass is similar to Phalaris aquatica but is more suitable for use in exposed northern regions as it is a much hardier plant and will tolerate a wide range of soil types. It not only offers nesting and cover to pheasants but also provides wild birds with nesting sites. The crop is purely for cover and does not provide feed so bare patches may be left unplanted or later cut out to provide areas for artificial feeding. As with Phalaris aquatica drilling in wide rows is necessary rather than broadcasting or the crop will become too dense. Annual management should be undertaken to keep the rows clear. Topping is beneficial if it becomes too tall, with the debris removed.

Characteristics / Quality:

- Seed Treatment - Untreated (Limited)



PERENNIAL CHICORY

Sowing Rate: 5kg/ha

Creates tall, dense cover, bolting in its second year to create a 6 - 7ft flowering hedge, useful where a perimeter barrier is required. It has good tolerance to drought, acid soils and major pests (but does not like very wet ground) and has a high mineral content including zinc, potassium and copper.

Characteristics / Quality:

- Seed Treatment - Untreated



GENERAL PURPOSE REARING PEN MIX (AHL4, IGL3)

Sowing Rate: 32-37kg/ha

Characteristics / Quality:

- Seed Treatment - Untreated

% Cultivar Species:

25% Amenity Perennial Ryegrass, 23% Late Perennial Ryegrass (Diploid), 20% Creeping Red Fescue, 15% Timothy, 7% Meadow Fescue, 5% Birdsfoot Trefoil, 5% White Clover

PLEASE NOTE:
mixtures are subject to change slightly.



CANARY GRASS (PHALARIS AQUATICA)

Sowing Rate: 6kg/ha

Canary Grass provides excellent medium to long term nesting cover for pheasant and partridge and can be used to both hold and drive birds. It is useful in areas where annual planting is not an option, either because it is uneconomic or too difficult and is a good choice to use between tree rows in newly established woods. Care must be taken to drill in wide enough rows to prevent the canary grass becoming too dense and therefore impassable for the birds. Annual management should be undertaken to keep the rows clear and topping is beneficial if the grass becomes too tall, with the debris being removed.

Characteristics / Quality:

- Seed Treatment - Untreated (Limited)

LATE COVER & RESCUE MIXTURES

Our late cover and rescue mixtures have been specifically designed to be drilled late to either save a failed cover or after a crop has been harvested. All mixes grow extremely quickly and develop a thick cover which will last throughout the season.

PLEASE NOTE: mixtures are subject to change slightly.



RESCUE MIXTURE

(SAM2)

A rapid establishing and maturing mixture providing cover and potentially seeds in 16 weeks from sowing. Excellent as a rescue mixture for patching failed crops or where a later sown crop is required.

Sowing Rate: 12kg/ha

Characteristics / Quality:

- Seed Treatment - Untreated

% Cultivar Species:

50% Buckwheat, 15% Fodder Radish, 15% White Mustard, 10% Gold of Pleasure, 10% Brassica Carinata



KWIK FIX

(SAM2)

This is a flexible cover crop which can be used to patch failed spring game covers. Mustard increases the cover element and fodder radish prolongs the cover period. This mixture will not provide full season cover, but it is more winter hardy than straight mustard.

Sowing Rate: 12-15kg/ha

Characteristics / Quality:

- Seed Treatment - Untreated

% Cultivar Species:

80% Fodder Radish, 20% White Mustard



ZOOM BRASSICA MIXTURE

Zoom is a mixture of Winfred hybrid brassica and forage rape. This is a very vigorous and quick growing mixture which is ideal for replacing failed crops or patching spring sown crops. High seedling vigour gives a reliable establishment of a high leaf to stem ratio crop with carefully selected varieties that have good disease and bolting resistance.

Sowing Rate: 6-10kg/ha

Characteristics / Quality:

- Seed Treatment - Untreated



LATE COVER MIXTURE

(SAM2)

A rapidly establishing and maturing mixture providing winter cover to the height of 2 - 3 feet. It is often used as a patching crop where spring crops have failed. This mixture will tolerate drought conditions.

Sowing Rate: 12-15kg/ha

Characteristics / Quality:

- Seed Treatment - Untreated

% Cultivar Species:

75% Forage Rape, 14% White Mustard, 11% Fodder Radish



BOOST MIXTURE

(SAM2)

A fast growing, quick to establish, frost hardy crop. Ideal to sow in late summer or early autumn to provide cover that will last throughout the winter. Excellent as a 'rescue' mixture for patching failed crops or when a later sown crop is required.

Sowing Rate: 6-10kg/ha

Characteristics / Quality:

- Seed Treatment - Untreated

% Cultivar Species:

70% Brassica Carinata, 10% Spitfire, 10% Fodder Radish, 10% Brown Mustard

BRASSICAS

Brassicas provide good cover for holding, driving and feeding. They are largely unaffected by frost and wet weather therefore last the season long.



JUPITER LEAFY TURNIP

Sowing Rate: 5-7.5kg/ha

Jupiter is a very leafy turnip that is late flowering, covers the soil very fast and is winter hardy. This variety can be sown in spring or autumn and for forage production these leafy turnips can be grazed after just 6-8 weeks.

Characteristics / Quality:

- Seed Treatment - Untreated



SPITFIRE FORAGE BRASSICA

Spitfire is a modern multi-purpose rape which is a good companion to use with other fast establishing brassicas. It is a medium-tall variety with high dry matter, excellent aphid tolerance, good stock palatability and rapid establishment to maturity. It has high growth potential but careful management is required to avoid damaging stems for regrowth. Spitfire is a multiuse rape suitable for planting in spring for excellent summer and autumn feed or in early autumn for quality winter feed. The main strengths of Spitfire are excellent yield, insect tolerance, and a low dry matter (DM%) stem. The very low DM% content of the stem produces a high-quality forage, with good utilisation at grazing without limiting yield ability or regrowth potential.

Sowing Rate: 6-10kg/ha

Characteristics / Quality:

- Seed Treatment - Untreated



AVALON LEAFY TURNIP

Avalon is a very leafy turnip that is late flowering, covers the soil very fast and is winter hardy. This variety can be sown in spring or autumn. Avalon has a high dry matter yield and excellent resistance to Alternaria.

Sowing Rate: 5-7kg/ha

Characteristics / Quality:

- Treatment: Untreated
- Sow April - Mid Sept



TEXSEL GREENS (BRASSICA CARINATA)

Texsel Greens are a fast growing, shiny leaved brassica developed from Ethiopian mustard. They are easy to establish and provide frost hardy cover, producing a broken canopy which is great for flushing birds. Their rapid growth is ideal for suppressing weeds and they are often used as a patching crop when spring crops have failed.

Sowing Rate: 5-7.5kg/ha

Characteristics / Quality:

- Seed Treatment - Untreated



FORAGE RAPE

Forage Rape is particularly useful in that it can be used as a rescue or catch crop, continuing until the New Year when it flowers and goes to seed. A well grown crop with adequate spacing between rows will provide good cover for holding, driving and feeding. It is largely unaffected by frost and wet weather.

Sowing Rate: 6-10kg/ha

Characteristics / Quality:

- Seed Treatment - Untreated (Limited)



ZOOM BRASSICA MIXTURE

Zoom is a blend of Winfred hybrid brassica and forage rape. This is a very vigorous and quick growing mixture which is ideal for replacing failed crops or patching spring sown crops. Good seedling vigour gives a reliable establishment of a high leaf to stem ratio crop using carefully selected varieties with good disease and bolting resistance.

Sowing Rate: 6-10kg/ha

Characteristics / Quality:

- Seed Treatment - Untreated



MAINSTAR

Mainstar is a highly palatable modern early maturity rape with quality frost resistance and excellent regrowth potential after grazing, extending grazing time. It is a very versatile brassica with extremely good aphid tolerance. The main strength of Mainstar is the early maturity leading to the potential for earlier grazing which will extend the grazing period for stock. Mainstar is suitable for a wide range of soil fertility and environmental conditions.

Sowing Rate: 6-10kg/ha

Characteristics / Quality:

- Treatment: Untreated

SORGHUM

Sorghum is a semi-tropical, non-cob producing, maize-like plant which will provide cover throughout the shooting season. It thrives best in warm, sunny growing conditions and therefore is suited to the more southerly regions of the UK. Sorghum is a very slow establishing plant that does not begin to flourish until late July.

PLEASE NOTE: mixtures are subject to change slightly.



INTERMEDIATE SORGHUM

Intermediate Sorghum as suggested by its name, is in between giant and dwarf in height, approx 1.5m. Useful as a windbreak around other game cover crops, it provides pheasant and partridge with protection from overhead predators. Has an attractive seed-head.

Sowing Rate: 20kg/ha (8kg/Acre)

Characteristics / Quality:

- Seed Treatment - Untreated



GIANT SORGHUM

Giant Sorghum is a sorghum x sudan grass hybrid standing approximately 2 metres tall and therefore is extremely useful as a windbreak to protect more vulnerable crops. Its deep rooting system enables it to withstand drought conditions. Useful as a flushing crop even though it is prone to lodging later in the season.

Sowing Rate: 20kg/ha (8kg/Acre)

Characteristics / Quality:

- Seed Treatment - Untreated



DWARF SORGHUM

Dwarf Sorghum has a short, sturdy, broad-leaved stem and a substantial seed-head, providing birds with warm cover throughout the shooting season. Often sown as a companion to maize with the bulkier, shorter sorghum plants giving protection to the birds below the taller growing maize plants.

Sowing Rate: 20kg/ha (8kg/Acre)

Characteristics / Quality:

- Seed Treatment - Untreated

MILLETS

Millets are a popular option and can be grown straight or as a mix providing good cover and feed values. Not only does it attract gamebirds but also is a favourite for wild birds.

PLEASE NOTE: mixtures are subject to change slightly.

JAPANESE REED MILLET

Japanese Reed Millet is a stronger plant than other members of the millet family and is more winter hardy. When mixed with white and red millet it provides an excellent cover and feed crop (see Ambush Millet Mix).

Sowing Rate: 12kg/ha (5kg/Acre)

Characteristics / Quality:

- Treatment: Untreated



RED MILLET

Red Millet is earlier maturing than white and does not stand well when sown alone. However it is a good partner to use with white millet as it extends the feeding period (see Millgame Millet Mix). As with other millets, it is susceptible to frost.

Sowing Rate: 12kg/ha (5kg/Acre)

Characteristics / Quality:

- Treatment: Untreated



AMBUSH MILLET MIX

Ambush Millet Mix is a combination of white, red and Japanese reed millet. The reed millet being a stronger plant and more winter hardy provides cover while the white and red millet produces plentiful seed to hold the birds in the cover. It is an ideal mixture for use as a wind-proof belt on the outside of a block of maize or as a flushing point at the end of maize.

Sowing Rate: 12kg/ha (5kg/Acre)

Characteristics / Quality:

- Treatment: Untreated

% Cultivar Species:

40% White Millet, 40% Red Millet, 20% Japanese Reed Millet



WHITE MILLET

White Millet is best suited to more southerly regions of the UK as it is a sunshine loving plant and is not frost hardy. It provides warmth, shelter and feed for game birds and will attract wild seed-eating birds such as finches. White millet is particularly attractive to grey and red-legged partridges and if sown alone can be used for early holding cover. When required to last longer into the season it performs well if sown with maize, but will combine well with a variety of other game cover crops.

Sowing Rate: 12kg/ha (5kg/Acre)

Characteristics / Quality:

- Treatment: Untreated



MIXTURES

Our range of game cover mixtures are specially formulated to ensure you will be able to achieve the best from your cover crops. Combining different species into a mixture can extend the utilisation period, help to attract and hold specific types of game and provide feed and cover where both are required. However, there are sometimes instances when none of the above will fit the bill for one reason or another. In these cases, specialised mixtures to suit individual specific requirements can be arranged.

PLEASE NOTE: mixtures are subject to change slightly.

BROADSHOT MIXTURE (AB9, AHL2)

A combination of species selected to provide feed and cover. This mixture can be left to regenerate for a second year. Species selected to facilitate economical weed control with chemicals such as Clopyralid.

Sowing Rate: 15kg/ha

Characteristics / Quality:

- Seed Treatment - Untreated

% Cultivar Species: 34% Buckwheat, 17% Kale, 10% Phacelia, 10% White Millet, 8% Forage Rape, 8% Red Millet, 5% Japanese Reed Millet, 4% Quinoa, 4% Gold of Pleasure



SUNDOWN MIXTURE

A carefully blended mixture of game cover maize, sorghum and sunflowers that combine fantastic feeding and cover potential of the species. This mixture provides full season cover and feed. It is not recommended for marginal areas.

Sowing Rate: 32kg/ha

Characteristics / Quality:

- Seed Treatment - Untreated

% Cultivar Species:

55% Game Maize, 25% Sunflower, 20% Sorghum



TRADITIONAL GAME COVER MIXTURE

A traditional mixture of species especially selected for their feed and cover qualities. This mixture is designed for a full season of cover that will provide holding, feed and cover for all game birds. The sunflowers add an attractive splash of colour. Due to the variance in seed size broadcast to achieve optimum establishment. Ensure that treated seed is covered by harrowing and rolling.

Sowing Rate: 25kg/ha

Characteristics / Quality:

- Seed Treatment - Various Treatments

% Cultivar Species: 17.5% White Millet, 15% Game Maize, 15% Red Millet, 14% Buckwheat, 12% Intermediate Sorghum, 10.5% Sunflower, 9.5% Kale, 2.5% White Mustard, 2.5% Forage Rape, 1% Gold of Pleasure, 0.5% Phacelia



Don't hesitate to contact us for more information or advice from an expert. We're here to help!

+44 (0) 7947 954 614 enquiries@rccrops.co.uk

www.rccrops.co.uk

BIOGAS

A RANGE OF BIOGAS CROPS TO SUIT YOUR ENERGY NEEDS

We as a company supply a variety of different crops including maize and energy beat. There are many different varieties to choose from depending on soil type, yield potential and harvest management. High output feedstocks crops are key to any biogas farmer.

MAIZE

A well-known source of biogas, having the advantages of a high methane yield per acre and being relatively easy to store. When choosing varieties, high dry matter and high yields are the major considerations; however yields of ME and starch should also be taken into account.



SEVERUS

EARLY: FAO 170

Commanding Yields from KWS!

Sowing Rate: 103-106k/Hectare

Characteristics / Quality:

- Stable DM yield - across all NIAB trials (99%)
 - Outstanding early vigour on all soil types
 - Very high starch (35.1%) and ME content (11.51 MJ/Kg)
- "Severus has been the benchmark for UK variety suitability in the early segment and remains a popular choice amongst KWS hybrids."*



KEOPS

MAINCROP: FAO 210/220

Multi-use silage or biogas

Sowing Rate: 103-106k/Hectare

Characteristics / Quality:

- Significant yield potential on favourable sites (23.3t/ha DM)
 - Can be used to spread drilling
 - Wide harvest window due to stay green nature
 - Strong early vigour gets early sowing up and away
 - Seed at 103k/ha, in low rainfall areas 94k/ha to protect yield
- "KEOPS offers a wide drilling and harvest window for silage or AD in warmer areas."*



KWS ZIMO

FAO 190

Fill your silo - time after time

Characteristics / Quality:

- High yields on favourable sites (19.1 t/ha DM)
- Balanced starch content (35%) is ideal for 50-70% maize diets
- High ME content (11.92 MJ/kg DM) fuels animal digester performance
- Excellent early vigour (7.5) provides a rapid establishment and promotes a longer growing season
- A highly flexible dual use variety for both forage & biogas systems



KWS ANASTASIO

 EARLY / MAINCROP: FAO 180/190

Maincrop silage and grain hybrid for every season

Sowing Rate: 103-106k/Hectare

Characteristics / Quality:

- High DM yields (106%) to fill your clamps, forage or biogas
 - Great starch content (32%) for high maize diets
 - High energy content (11.57 MJ/kg DM) to deliver ration performance
 - Highly suitable for CCM and grain cropping
 - Leading early vigour (7.4) on all soils types for a rapid establishment
 - Suitable for forage, grain and biogas systems
- "KWS ANASTASIO provides harvest flexibility, and is suited to all needs: forage, CCM, crimped or dried grain, and also for biogas."*



DEBALTO

EARLY: FAO 170

Push your starch yield, keep your harvest on track

Characteristics / Quality:

- Strong yield performance (18.9t/ha DM) across all sites
 - High grain:stover ratio provides an energy dense silage
 - Starch content (34.2%) • Energy content (11.58 MJ/kg DM)
 - Suited for mod - high (50-70%) TMR dairy or beef finishing rations
 - Excellent vigour across all soil types (7.5)
- "DEBALTO offers leading starch yields, high grain density & lower ear insertion height."*



AUTENS KWS

EARLY: FAO 170

Sowing Rate: 103-106k/Hectare

Characteristics / Quality:

- Stable yield performance (18.1t/ha DM) • High starch content (34.3%)
 - Faster dry down with great standing power
 - Outstanding early vigour (7.5) on all soil types
 - Excellent energy content (11.74 MJ/kg DM)
 - Provides an excellent early harvest option on lighter land
- "AUTENS KWS offers stable yield performance & high kernel content, for proven starch yield in favourable areas."*



PAPAGENO

EARLY/MAINCROP: FAO 190

Characteristics / Quality:

- Excellent dry matter yields - 21.1t/ha in 2021 DL
 - Starch (32.8%) exceptionally well balanced for the highest maize inclusion rates in a ration
 - Great energy (11.40 MJ/kg DM) content to drive animal performance
 - High early vigour (6.8) • Dual use in both forage and biogas
 - Ideal variety to aid the spread of drilling and harvest
- "PAPAGENO adds more options for AD or silage growers looking for a wider drilling window, and high yield performance."*



AURELIUS KWS

EARLY: FAO 180

A new dynasty in maize growing!

Sowing Rate: 103-106k/Hectare

Characteristics / Quality:

- Consistent DM yield (101% DM yield) • Rapid early vigour (7.5)
 - Suitable for high maize inclusion in diets (60%+) due to balanced starch content (32.7%)
 - High energy content (11/67 MJ/kg DM) drives ration performance
 - Can help stagger harvest window for biogas growers
- "AURELIUS KWS is a consistent yield performer. Particularly suited to high maize inclusion in modern TMR rations."*



AMAROC

ENERGY: FAO 240

Sowing Rate: 103-106k/Hectare

Characteristics / Quality:

- Heavy yield potential (55-60 t/ha)
 - Ideal for spreading harvest or drilling window on lighter land - Surpasses former generation hybrids eg: CAROLINIO and BARROS
 - Rapid early vigour • Recommended chop length: 7-9 mm
 - In low rainfall areas: 38k seeds / acre (94k seeds / hectare)
- "AMAROC offers excellent DM yield for AD feedstock production on favourable sites, and high heat unit areas."*



KWS KAMPINOS

MAINCROP: FAO 200/210

Continental yields with cold tolerance...silage or AD use!

Sowing Rate: 103-106k/Hectare

Characteristics / Quality:

- Heavy yield potential on favourable sites (21.5t/ha DM)
 - Ideal hybrid for spreading drilling window • High grain:stover ratio for stable ripening • Excellent starch content for maturity (34.1%)
 - Significant energy density (11.63 MJ/Kg DM) for animal or AD performance
- "KWS KAMPINOS adds more options for AD and silage growers to fill clamps. Allows a wider drilling window/harvest in suitable conditions."*



KILOMERIS

FAO 260/270

The ultimate in feedstock yield - ideal for light soils!

Characteristics / Quality:

- Ideal hybrid for drought-prone areas, yields exceed earlier hybrids
- Enormous yield potential on the most favourable, high heat unit sites (24 t/ha DM 2019)
- Excellent early vigour • Reduce chop length to 7-9 mm to ensure optimal clamp and AD performance
- Seed at 40k seeds/acre (98k seeds/ha) in most areas
- In low rainfall areas reduce to 38k seeds/acre (94k seeds/ha)



KWS EXELON

EARLY: FAO 170

Drive your silage output!

Sowing Rate: 103-106k/Hectare

Characteristics / Quality:

- Leading DM Yield (18.9t/ha) • Excellent starch content (34.6%)
 - Fantastic energy values produces superb silage (11.74MJ/kg DM)
 - Highly suited to moderate to high (50-70%) inclusion in dairy and finishing rations
 - Excellent vigour (7.1) on all soils allows crop to get up and away fast.
- "KWS EXELON has a lower ear insertion height resulting in greater stability. The potential to carry 20 grains per ring provides superb grain quality, leading to high starch yields. Combined with excellent DM yield and maturity providing a complete variety."*



AGROLINO

FAO 200

A heavy hitter delivering a knockout punch!

Characteristics / Quality:

- High yields (19.5 t/ha DM) ensures clamps are full
- Balanced starch content, ideal for high maize inclusion ruminant diets
- Very suited to favourable sites with a longer growing window
- High early vigour (7.0) widens the drilling options
- Provides harvest security with a wide harvest period, particularly in the AD segment

GREEN MANURING

Green Manuring can bring many advantages to the farmer by adding organic matter to the soil, increasing biological activity, improving soil structure, reducing erosion, increasing the supply of nutrients available to plants (particularly by adding nitrogen to the system by fixation), reducing leaching and weed suppression.

Useful information and growing tips

Crop	Pack size	Average sowing Rate kg/ha	Treatment Type	Sowing Dates	Incorporation Period	Root type/ depth	Soil type	Nitrogen Fixing	Useful information and growing tips
Short Term Crops Spring/Summer/Autumn Incorporation									
White Mustard	10kg & 25kg	12 - 17	Untreated & Organic	Spring - Early Autumn	8 weeks after sowing	Fibrous root system	All types, best on light, sandy soils	Storing	Fast growing and good weed suppressor. Has biofumigation properties but not to same extent as brown mustard. Produces large quantities of biomass. Excellent scavenger of nitrogen. Requires fine seedbed. Susceptible to Club root. Plough in before flowering to prevent self-seeding.
Brown Mustard	5kg	5 - 7.5	Untreated & Organic	Spring - Autumn	Autumn - Spring	Taproot	All types, prefers moist ground	Storing	As white mustard, but contains high levels of glucosinolate which create biofumigation properties to reduce wireworm infestation. To maximise this benefit, crop must be finely chopped at flowering and thoroughly incorporated into moist soil. Brown mustard is winter hardy so is excellent for reducing soil erosion, water run-off and fertiliser leaching when grown after maize, potatoes & sugar beet.
Phacelia	2kg & 5kg & 10kg	7.5 - 10	Untreated	Spring - Summer	10 - 12 weeks after sowing	Shallow, fibrous	Most soil types, will tolerate dry conditions	Storing	Quick to establish and a good weed suppressor. Flowers loved by bees and butterflies. The crop must be incorporated into the soil before setting seed or it may reappear in subsequent crops as a weed. Said to release many minerals into soil as it decomposes, especially P, Ca and Mg.
Buckwheat	10kg & 25kg	50 - 70	Untreated & Organic	Spring - Summer	Summer - Autumn	Shallow, but with good penetration	Tolerates poor, but not wet soils	Storing	Fast growing and quick to mature, not winter hardy. Dislikes wet, heavy or compacted soil. Do not allow to set seed before incorporating into soil. Attractive to beneficial insects especially hoverflies. Good scavenger of phosphate.
Crimson Clover	1kg & 25kg	12.5 - 15	Untreated & Organic	Spring	Summer - Autumn	Taproot with fibrous branch roots	Prefers loam, will tolerate poor soils as long as alkaline and free draining	Fixing	Very attractive to insects. Excellent weed suppressor. Biomass degrades quickly into soil. Will over-winter in Southern England for autumn sowing/spring incorporation. Shade tolerant.
Alsike Clover	25kg	5 - 7.5	Untreated	Spring	Autumn	Branched taproot	Most types	Fixing	Less biomass than red and white clover but better adapted to wet, acid soils and cooler conditions. Requires shallow sowing and firm seedbed
Fodder Radish	10kg & 25kg	10 - 20	Untreated & Organic	Summer - Autumn	Autumn - Spring	Deep rooting taproot	Most types	Storing	Good early vigour that gives quick soil coverage, with a large biomass and a large taproot. Excellent Nitrogen scavenger
Daikon Radish	5kg & 25kg	8 - 10	Untreated	Summer - Autumn	Autumn - Spring	Deep penetrating taproot	Most types	Storing	Fast establishing, big biomass, long large white tubers. Excellent for breaking up compacted soil with its aggressive taproot. An excellent nitrogen scavenger.
Egyptian/Berseem Clover	25kg	10 - 22	Untreated	Spring - Early Summer	Later Summer - Autumn	Taproot with fibrous root network	Needs deep fertile soils (uncompetitive)	Fixing	Annual clover. Grows aggressively throughout the summer and autumn. Likes deep fertile soils with plenty of moisture. Produces large amounts of biomass along with fixing large quantities of nitrogen. A good cover crop to put between two cereal crops.
Black Oats/ Japanese Oats (Avena strigosa)	25kg & 500kg	50 - 75	Untreated	Later Summer - Autumn	Winter - Early Spring	Fibrous root system	Grow in most soil types and conditions	Storing	Grows well under most conditions. Early vigour, quickly producing lots of biomass due to the plant rapidly tillering. Can flower early. The fast establishment helps to suppress weeds. Good at disrupting disease cycles. Not frost hardy.
Over Winter Crops Autumn Sowing & Spring Incorporation									
Forage Winter Rye	25kg & 500kg	90 - 150	Untreated	Autumn	Spring	Extensive, fibrous root system	Grows well on light, sandy, free-draining soils	Storing	Produces large amounts of green material. Excellent nitrogen scavenger and for the prevention of nitrate leaching during winter months. Do not allow to run to seed as this will 'lock-up' available nitrogen. Very hardy.
Italian Ryegrass	25kg	35 - 38	Untreated & Organic	Autumn	Spring	Extensive, fibrous root system	Diploids better in wet areas and tetraploids in drier	Storing	As with forage rye, produces high yields of biomass. Good root system for improving soil structure. If seed heads are produced, crop must be cut before seed is shed to prevent infestation of following crop. Good 'mopper-up' of excess soil nitrogen.
Cocksfoot	15kg - 20kg	5 - 7.5	Untreated & Organic	Spring / Autumn	Autumn - Spring	Thick and fibrous with large energy reserves	Dry, free-draining	Storing	When undersown at a low seed rate into winter wheat, cocksfoot is an excellent soil improver for drought-prone soils.
Forage Rape	10kg & 25kg	6.5 - 10	Untreated & Organic	Spring / Autumn	Autumn - Spring	Deeply penetrating taproot	Most types, able to tolerate poor soil & exposed sites	Storing	Fast growing. Good alternative to mustard if using high glucosinolate varieties, as decomposition can release chemicals which produce a biofumigation effect if incorporated within 24 hours of cutting. Where club root is a problem, make sure a resistant variety is used.
Vetches	25kg	60 - 90	Untreated & Organic	Spring / Autumn	Autumn - Spring	Taproot	Prefers loams and clay. Will not thrive in wet or waterlogged conditions	Fixing	Good weed suppressor. Ensure a winter hardy variety is used. Due to its large seed size, will establish later than most other legumes. Requires fine, firm seedbed.
Longer Term Crops									
Lucerne Pre-inoculated	25kg	20 - 25	Untreated & Organic	Spring - Early Autumn	Autumn - Spring	Very deep taproot	Light/chalky/free-draining	Fixing	Seed must be inoculated with rhizobium bacteria. Prefers dry growing conditions. Uncompetitive particularly in early stage of development so grow as pure stand or with non-aggressive companion grasses.
White Clover	1kg & 25kg	5 - 7.5	Untreated & Organic	Spring - Early Autumn	Autumn - Spring	Creeping stolons, Shallow rooting	Wide range. Tolerates dry conditions	Fixing	Continued defoliation stimulates root growth and nitrogen fixation. Smaller leaved varieties are more persistent than larger leaved. Good weed suppressor. Shallow sow into fine, firm seedbed.
Red Clover	1kg & 25kg	12.5 - 15	Untreated & Organic	Spring - Early Autumn	Autumn - Spring	Large, strong taproot	Wide range, avoid poorly drained, acid soils	Fixing	Aggressive plant, does not release N until crop is ploughed in. Shorter term than white clover. Good for improving and aerating soil structure & useful weed suppressor. Ensure fine, firm seedbed.
Yellow Blossom Clover	2kg & 25kg	12.5 - 15	Untreated	Spring	Summer - Autumn	Long taproot	Prefers poor soil and dry conditions. Dislikes wet, heavy ground	Fixing	Biennial. Quick to establish and grows vigorously. Improves soil structure. Plough in before flowering and before stems become woody. Attractive to bees and other insects if allowed to flower.



GREEN MANURING MIXTURES

Our range of green manure mixtures have been specially formulated to help you achieve the best from your soil by protecting and improving soil fertility and health between cash crops. Fast growing species have been chosen to help suppress weed growth and provide excellent cover producing huge quantities of organic matter and a variation of different rooting depths to ensure good soil penetration and utilisation of surplus nutrients. Bespoke mixtures to suit individual, specific requirements can also be arranged.



N-RETAIN COVER MIX (SAM2)

A balanced mixture containing fast growing species which produce large amounts of biomass. The species used offer a wide range of rooting depths some have a fibrous root system and others produce long taproots. Both roots soak up and retain residual nutrients left behind by the previous crop.

Sowing Rate: 15-25kg/ha

Characteristics / Quality: • Seed Treatment - Untreated
% Cultivar Species: 30% Vetch, 15% Buckwheat, 15% Crimson Clover, 12% Fodder Radish, 10% Daikon Radish, 10% Egyptian Clover, 5% White Mustard, 3% Phacelia



N-HANCE COVER MIX (SAM2)

This mixture will benefit the soil by the use of species that absorb the leaching nutrients and has the added advantage of the useful nitrogen fixing winter vetch. It produces a huge quantity of organic matter and has the benefit of radish's large roots that can utilise nutrients from the deeper layers of soil.

Sowing Rate: 35-50kg/ha

Characteristics / Quality: • Seed Treatment - Untreated
% Cultivar Species: 60% Forage Rye, 30% Winter Vetch, 7% Fodder Radish, 3% White Mustard



N-RICH COVER MIX (SAM2)

Vetch and rye complement each other to provide an excellent cover crop mixture for the winter. Vetch is fast growing and have a very prolonged growing season, combined with excellent winter hardiness. They are able to fix nitrogen at lower temperatures than other legumes. Forage rye is deep rooting which provides a good underground network for the plant to scavenge most of the nitrogen left by the previous crop.

Sowing Rate: 50-75kg/ha

Characteristics / Quality: • Seed Treatment - Untreated
% Cultivar Species: 80% Forage Rye, 20% Winter Vetch

N-LIVEN COVER MIX (SAM2)

The primary role of this seed mix is nitrogen fixation to boost soil fertility between main crops especially two cereal crops. The mix maintains cover well into late winter and provides a range of rooting depth for enhanced soil aeration and drainage. The mix could also be grazed as a means of removal rather than chemical or cultivation methods.

Sowing Rate: 15kg/ha

Characteristics / Quality: • Seed Treatment - Untreated
% Cultivar Species: 60% Vetch, 30% Crimson Clover, 10% Phacelia

N-TRAP COVER MIX (SAM2, IPM3)

A combination of fast growing species that act as an alternative food source and distraction to pests that prey on brassica crops. The canopy cover has the potential to slow the progress of flea beetle whilst fixing and releasing nitrogen to companion oilseed rape crops. The cover crop will die back over winter for ease of management.

Sowing Rate: 10kg/ha

Characteristics / Quality: • Seed Treatment - Untreated
% Cultivar Species: 65% Buckwheat, 35% Egyptian Clover

N-GRAZE COVER MIX (SAM2)

A grass based catch crop with wide nutritional benefits. The grass helps knit the cover together and keep animals clean whilst providing high nutritive value. Has high plant vigour for rapid establishment and growth, with high protein production enhanced by carbohydrates and sugars. Good weed suppression with good potential regrowth from the grass if required the following spring. Sow from March to mid September.

Sowing Rate: 30-35kg/ha

Characteristics / Quality: • Seed Treatment - Untreated
% Cultivar Species: 65% Italian Ryegrass (Dip), 30% Vetch, 3% Forage Rape, 2% Stubble Turnip

N-SCENT COVER MIX (SAM2, IPM3)

Two fast growing species that both have the ability to fix nitrogen and act as a distraction to plant pests and predators. Fenugreek gives off a distinctive aroma that deters flea beetle.

Sowing Rate: 10kg/ha

Characteristics / Quality: • Seed Treatment - Untreated
% Cultivar Species: 50% Egyptian Clover, 50% Fenugreek

N-JOY COVER MIX (SAM2)

A combination that provides quality grazing that is high in protein and effective soil conditioning. It is quick to establish and mature, offering a prolonged utilisation period and is winter hardy. The species used provide deep root penetration for soil aeration, nitrogen fixation and weed suppression. Sow by mid September

Sowing Rate: 22-25kg/ha

Characteristics / Quality: • Seed Treatment - Untreated
% Cultivar Species: 70% Vetch, 10% Crimson Clover, 10% White Millet, 5% Forage Rape, 5% Plantain



BUSTER COVER MIX (SAM2)

A mixture containing species with aggressive deep roots that will help with difficult compacted soils and producing huge amounts of biomass. During the winter months this mixture can benefit the soil by providing vast quantities of organic matter, and prevent nutrients being lost.

Sowing Rate: 30-40kg/ha

Characteristics / Quality: • Seed Treatment - Untreated
% Cultivar Species: 35% Buckwheat, 15% Linseed, 15% Daikon Radish, 12% Crimson Clover, 12% Fodder Radish, 6% Gold of Pleasure, 5% Phacelia

ANNUAL FALLOW MIX (SAM2, NUM3)

Sowing Rate: 15-20kg/ha

Characteristics / Quality:
 • Seed Treatment - Untreated

% Cultivar Species:
 38% Vetch, 32% Linseed, 10% Crimson Clover, 5% Gold of Pleasure, 5% Sainfoin, 4% Phacelia, 4% White Mustard, 2% Lucerne (inoculated)

ANNUAL NECTAR MIX (AHL1, SAM2)

Sowing Rate: 20kg/ha

Characteristics / Quality:
 • Seed Treatment - Untreated

% Cultivar Species:
 25% Buckwheat, 25% Linseed, 20% Vetch, 15% Crimson Clover, 10% Berseem Clover, 4.6% Phacelia, 0.2% Black Knapweed, 0.2% Ag Yarrow

FAST GROWING NON CEREAL MIXTURES



LATE COVER MIX (SAM2)

A rapidly establishing and maturing mixture providing winter cover to the height of 2 - 3 feet. It is often used as a patching crop where spring crops have failed. This mixture will tolerate drought conditions.

Sowing Rate: 12-15kg/ha

Characteristics / Quality:
 • Seed Treatment - Untreated
% Cultivar Species:
 75% Forage Rape, 14% White Mustard, 11% Fodder Radish

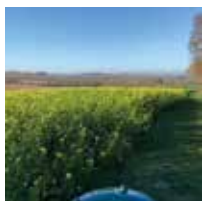


BOOST MIX (SAM2)

Sowing Rate: 6kg/ha

Characteristics / Quality:
 • Seed Treatment - Untreated

% Cultivar Species:
 70% Brassica Carinata, 10% Spitfire, 10% Fodder Radish, 10% Brown Mustard



RESCUE MIX (SAM2)

Sowing Rate: 12kg/ha

Characteristics / Quality:
 • Seed Treatment - Untreated

% Cultivar Species:
 50% Buckwheat, 15% Fodder Radish, 15% White Mustard, 10% Gold of Pleasure, 10% Tessel Greens



KWIK FIX (SAM2)

Sowing Rate: 12-15kg/ha

Characteristics / Quality:
 • Seed Treatment - Untreated

% Cultivar Species:
 80% Fodder Radish, 20% White Mustard

PLEASE NOTE: ALL mixtures are subject to change slightly.

GREEN MANURING CROPS

Our handy crop guide is given in good faith and intended for general guidance only. Weather, local conditions and crop rotations must always be taken into account.



WHITE CLOVER (IPM3)

Sowing Rate: 5-7.5kg/ha

Really useful fertility aid or "living mulch" that make it an excellent companion crop for many species especially cereals. Best to surface sow into a firm seed bed where the clover's creeping stolons can infill gaps and the small leaved cultivars have the ability to maintain ground cover, offer weed suppression and aid growth by nitrogen fixation and release. Sowing rate and pack size as per table. Note that sowing rates can be halved when used as a companion crop

Characteristics / Quality: Seed Treatment - Untreated



JUPITER LEAFY TURNIP

Sowing Rate: 5-7.5kg/ha

Jupiter is a very leafy turnip that is late flowering, covers the soil very fast and is winter hardy. This variety can be sown in spring or autumn and for forage production these leafy turnips can be grazed after just 6-8 weeks.

Characteristics / Quality:

- Seed Treatment - Untreated



FORAGE RYE

Sowing Rate: 125-185kg/ha

A cereal crop that produces large amounts of organic matter and suppresses weeds. An excellent nitrogen scavenger that helps the prevention of nitrate leaching during the winter months. Winter hardy. Do not allow it to run to seed as this will lock up available nitrogen.

Characteristics / Quality:

- Seed Treatment - Untreated



BLACK OATS / JAPANESE OATS - AVENA STRIGOSA

Sowing Rate: 50-75kg/ha

A rapid growing leafy cereal crop which has early vigour with good weed suppression. It will produce large amounts of organic matter. Destroy before flowering to prevent self-seeding. Not winter hardy.

Characteristics / Quality:

- Seed Treatment - Untreated



FODDER RADISH (OIL RADISH)

Sowing Rate: 10-20kg/ha

A fast growing cover crop, its speed of establishment aids weed suppression. It has a long tap root which will improve the soil structure and also has plenty of leaf that produces a large quantity of organic matter. An excellent nitrogen scavenger. Some varieties are nematode resistant.

Characteristics / Quality:

- Seed Treatment - Untreated



WHITE MUSTARD

Sowing Rate: 12kg/ha

Popular as a green manure crop. A relatively inexpensive and highly versatile cover crop either sown alone or as a companion to other species. It is fast growing and good weed suppressor. Has bio fumigation properties but not to the same extent as brown mustard. Ideal for early cover and produces large quantities of biomass although killed off by frost later. An excellent scavenger of nitrogen. Destroy before flowering to prevent self-seeding. Some varieties are nematode resistant.

Characteristics / Quality: Seed Treatment - Untreated



DAIKON RADISH

Sowing Rate: 6-10kg/ha

A rapid growing crop that produces a large amount of biomass. It has the ability to reduce nematodes and is an excellent weed suppressor. It produces a long aggressive taproot that penetrates through many different soil types, improving drainage and air movement through the soil. A major benefit is that it captures and stores nutrients from deep in the soil over the winter period, which are released in the spring for the next crop. It can provide cover throughout the winter for game birds or can be used as a fast growing, nutrient storing green manure crop.

Characteristics / Quality: Seed Treatment - Untreated



BROWN MUSTARD

Sowing Rate: 2.5-7.5kg/ha

A fast growing green manure crop with bio fumigation properties, i.e. it suppresses soilborne pests and diseases. It is an easy to establish 50-70 day crop that can be sown between April and September. Unlike white mustard, it is winter hardy. Improves the health of soil by increasing organic matter and is an excellent weed suppressant. Especially useful as an over-wintering green cover after maize, potatoes and sugar beet crops, reducing soil erosion, fertiliser leaching and water run-off.

Characteristics / Quality: Seed Treatment - Untreated



BERSEEM CLOVER

Sowing Rate: 15-22kg/ha

Also referred to as Egyptian clover, this is an annual species capable of explosive growth to produce a large biomass very quickly. The larger mass offers greater nitrogen production and return to the soil. The species has no frost tolerance and the large, fleshy plants produced degrade rapidly for ease of incorporation.

Characteristics / Quality:

- Seed Treatment - Untreated



CRIMSON CLOVER

Sowing Rate: 12-15kg/ha

This is an annual clover that establishes quickly to aid weed suppression and has a wonderful network of tap and branch roots. It has a crimson flower that attracts many insects and the ability to trap and add Nitrogen to the soil for following crops. The species does have over wintering capabilities and the biomass produced degrades rapidly back into the soil profile.

Characteristics / Quality:

- Seed Treatment - Untreated



PHACELIA

Sowing Rate: 7.5-10kg/ha

A prolific seeder, very fast to establish and a good weed suppressant due to its root system. It produces a mass of sweet smelling purple flowers providing a good source of nectar, beneficial to a large variety of insects. It is not winter hardy and must be incorporated into the soil before setting seed to prevent self seeding. Mineral rich in items like P, Ca and Mg.

Characteristics / Quality:

- Seed Treatment - Untreated • Organic seed available



COMMON VETCH

Sowing Rate: 60-120kg/ha

A vigorous, scrambling legume that will establish when sown later than most other legumes due to its larger seed size. Growth habit and root activity proves the species a good competitor to weeds. Extremely useful as a Nitrogen fixer, soil conditioner and an enriched food source when needed as a companion crop to distract pests from cash crops.

Characteristics / Quality:

- Seed Treatment - Untreated
- Organic seed available



BUCKWHEAT

Sowing Rate: 50kg/ha

Very fast growing and quick to mature and is easily killed by frost. Can cope with low-fertility soils and is effective at scavenging phosphate and retaining nitrogen due to its fine, fibrous root system. It competes well with weeds and is attractive to all wildlife and insects. Do not allow seed return to the soil and graze with care as it can cause photosensitivity in livestock.

Characteristics / Quality:

- Seed Treatment - Untreated • Organic seed available



HAIRY VETCH

Sowing Rate: 60-120kg/ha

This differs from common vetch in that it has better cold tolerance maintaining ground cover through the winter and is more tolerant of wetter soils. It can fix around 220 kilos per ha of atmospheric nitrogen and has the capability to smother weed species due to its sprawling, creeping growth habit. Although vetch is readily grazed, hairy vetch may induce irritation of the mouth.

Characteristics / Quality:

- Seed Treatment - Untreated



LINSEED

Sowing Rate: 60kg/ha

Easy to establish with thin stems, attractive blue flowers and has a thin tap root with fine branches off it. Although not frost hardy, the stem is maintained through the winter and care should be taken when grazing due to cyanogens present in the plant. An excellent soil conditioner and aerator.

Characteristics / Quality:

- Seed Treatment - Untreated



GOLD OF PLEASURE

Sowing Rate: 12kg/ha

A brassica that is very fast to establish and mature and can cope with poorer soils. Good resistance to pest and disease attack and an excellent nectar source for bees. A medium level of biomass is produced but the species does have allelopathic properties that may impact on companion species in a mix. Some level of winter tolerance.

Characteristics / Quality:

- Seed Treatment - Untreated
- Organic seed available



WILD BIRD SEED

Looking after Nature whilst suiting your Farming Schemes

WILD BIRD SEED MIXTURES

Wild Bird Seed mixtures provide important food resources for farmland birds & insects.

PLEASE NOTE: mixtures are subject to change slightly.

SPRING SOWN MIXTURES

ORGANIC MIXTURE 1 | 1 YEAR SPRING SOWN (OP2)

Sowing Rate: 40kg/ha

% Cultivar Species:

40% Organic Spring Wheat, 30% Organic Spring Barley, 13% Spring Triticale, 10% Fodder Radish, 5% White Millet 2% Red Millet

ORGANIC MIXTURE 2 | 1-2 YEAR SPRING SOWN (OP2)

Sowing Rate: 40kg/ha

% Cultivar Species:

35% Organic Spring Wheat, 35% Organic Spring Barley, 10% Spring Triticale, 7% Kale, 4% Fodder Radish, 4% White Millet, 3% Quinoa, 2% Red Millet

FEED & COVER MIXTURE (AB9, AHL2)

Sowing Rate: 40kg/ha

% Cultivar Species:

25% Spring Triticale, 24% Spring Barley, 24% Spring Wheat, 7% Dwarf Sorghum, 6% White Millet, 5% Sunflower, 3% Japanese Reed Millet, 2.5% Red Millet, 2.5% Gold of Pleasure, 1% Quinoa

WBS 1 | 1 YEAR SPRING SOWN (AB9, AHL2)

Attracts Tree Sparrows

Sowing Rate: 40kg/ha

% Cultivar Species:

40% Spring Triticale, 28% Spring Barley, 15% Spring Wheat, 10% Fodder Radish, 5% White Millet, 2% Red Millet

WBS 2 | 1-2 YEAR SPRING SOWN (AB9, AHL2)

Attracts Grey Partridge

Sowing Rate: 40kg/ha

% Cultivar Species:

45% Spring Triticale, 20% Spring Barley, 15% Spring Wheat, 7% Kale, 4% Fodder Radish, 4% White Millet, 3% Quinoa, 2% Red Millet

WBS 3 | 1 YEAR SPRING SOWN (AB9, AHL2)

Attracts Partridge

Sowing Rate: 40kg/ha

% Cultivar Species:

50% Spring Triticale, 20% Spring Barley, 10% Spring Oats, 7% Linseed, 5% Forage Rape, 4% Gold of Pleasure, 4% White Mustard

WBS 4 | 1 YEAR SPRING SOWN (AB9, AHL2)

Attracts Finches & Buntings

Sowing Rate: 40kg/ha

% Cultivar Species:

45% Spring Triticale, 25% Spring Barley, 8.5% Dwarf Sorghum, 7% White Millet, 5% Linseed, 4% Japanese Reed Millet, 3% Red Millet, 2.5% Gold of Pleasure

NORTHERN SPRING SOWN

FARMLAND (WILD) BIRD SEED MIXTURE NON CEREAL (AB9, AHL2)

Sowing Rate: 20kg/ha

% Cultivar Species:

40% Linseed, 34% Buckwheat, 10% Fodder Radish, 10% White Millet, 3% Phacelia, 3% Red Millet

NORTHERN STAR GAME MIXTURE (AB9, AHL2)

Sowing Rate: 40kg/ha

Treatment: Some species may be treated.

% Cultivar Species:

30% Spring Triticale, 29% Spring Barley, 20% Spring Wheat, 5% Forage Rape, 5% Kale, 5% Sunflower, 2% Gold of Pleasure, 2% Green Fennel, 2% Quinoa

NORTHERN WBS 1 | 1 YEAR SPRING SOWN (AB9, AHL2)

Sowing Rate: 40kg/ha

% Cultivar Species:

60% Spring Triticale, 20% Spring Barley, 10% Linseed, 5% Forage Rape, 3% Fodder Radish, 2% Phacelia

NORTHERN WBS 2 | 1 YEAR SPRING SOWN (AB9, AHL2)

Sowing Rate: 40kg/ha

% Cultivar Species:

50% Spring Triticale, 12% Spring Barley, 12% Spring Wheat, 7% Fodder Radish, 7% Kale, 7% Quinoa, 3% Green Fennel, 2% Crimson Clover

NORTHERN WBS 2 NON CEREAL | 1 YEAR SPRING SOWN (AB9, AHL2)

Sowing Rate: 20kg/ha

% Cultivar Species:

35% Linseed, 30% Buckwheat, 8% Gold of Pleasure, 8% White Mustard, 6% Kale, 5% Fodder Radish, 5% Phacelia, 3% Quinoa

NORTHERN WBS 2 NON CEREAL | 1 YEAR SPRING SOWN (AB9, AHL2)

Sowing Rate: 20kg/ha

% Cultivar Species:

35% Linseed, 30% Buckwheat, 8% Gold of Pleasure, 8% White Mustard, 6% Kale, 5% Fodder Radish, 5% Phacelia, 3% Quinoa

BROADSHOT MIXTURE (AB9, AHL2)

Sowing Rate: 20kg/ha

% Cultivar Species:

34% Buckwheat, 17% Kale, 10% Phacelia, 10% White Millet, 8% Forage Rape, 8% Red Millet, 5% Japanese Reed Millet, 4% Quinoa, 4% Gold of Pleasure

AUTUMN SOWN MIXTURES

WBA 1 | 2 YEAR AUTUMN SOWN (AB16)

Sowing Rate: 40-50kg/ha

% Cultivar Species:

30% Winter Wheat, 25% Winter Barley, 15% Winter Triticale, 6% Vetch, 5% Fodder Radish, 5% Forage Rape, 3% Gold of Pleasure, 3% Lucerne (inoculated), 2% Alsike Clover, 2% Birdsfoot Trefoil, 2% Crimson Clover, 2% Red Clover

WBA 2 AUTUMN SOWN BUMBLEBIRD MIXTURE 2 YEAR AUTUMN SOWN (AB16)

Sowing Rate: 40-50kg/ha

% Cultivar Species:

26% Winter Wheat, 25% Winter Barley, 15% Winter Triticale, 8% Fodder Radish, 6% Vetch, 5% Crimson Clover, 5% Kale, 3.4% Gold of Pleasure, 3% Lucerne (inoculated), 1% Birdsfoot Trefoil, 1% Phacelia, 1% Red Clover, 0.2% Black Knapweed (N), 0.2% Oxeye Daisy, 0.2% Yarrow

HERBS & LEGUMES

BUFFER STRIP MIXTURES

A variety of Herbs and Legume straights so that you can either purchase individual crops or select your own ingredients to custom make a mixture.



BIRDSFOOT TREFOIL

A nitrogen-fixing, anthelmintic species which helps boost soil fertility. Like Sainfoin, this species contains tannins to support the absorption of protein by both sheep and cattle. Birdsfoot Trefoil is continually included in diverse mixture sowing to its contribution of beneficial properties both above and below the soil surface.



LUCERNE

A persistent, perennial legume that performs particularly well on light, drought prone soils due to its deep, penetrating root system. The roots improve soil structure and aid fertility by fixing atmospheric nitrogen. Above the soil surface, Lucerne produces a high protein, palatable forage crop that is in an excellent accompaniment to energy feeds in a ration.



SHEEPS BURNET

A perennial herb which helps to provide a long grazing season attributable to its early spring growth. A well established tap root improves drought tolerance within a sward whilst aiding the supply of vital trace elements to livestock.



PLANTAIN

A perennial herb providing a high mineral forage with a crude protein content of around 20%. Plantain provides all-year round grazing, even in drought conditions. Often mixed with other herbs, this species provides well tillered plants in high density mixtures that will complement the grazing system.



RED CLOVER BLEND

A high protein, nitrogen-fixing forage legume that can be grown on almost all soil types. When grown as part of a mixture, clover greatly increases the forage yield for both grazing and cutting.



SAINFOIN

Sainfoin acts as a natural anthelmintic and the tannins this legume contains aids protein absorption and reduces the risk of bloat in ruminants. The nutritional balance and high voluntary intake of the species by livestock enhances DLWG or milk production. Best suited to light soils, the deep rooting system of Sainfoin provides a drought-resistant forage. Sainfoin also increases biodiversity by attracting an abundance of insects and invertebrates, especially pollinators.



CHICORY

A mineral-rich herb with a long taproot which infiltrates the soil to a great depth and can break through soil compaction. Chicory is a high protein, anthelmintic species that lifts trace elements from within the soil profile that are then made available for intake by livestock. Especially good for fattening lambs. Often included within diverse mixtures to provide a drought tolerant forage whilst improving soil condition.



YARROW

A forage herb with a very deep rooting structure that has been noted to improve circulation and blood flow in livestock. Yarrow is commonly mixed with Sheeps Parsley, Burnet and Plantain although due to its minute seed size, should only be included at a low rate to ensure that it does not dominate the sward.



SHEEPS PARSLEY

Often mixed with other forage herbs, this species has a deep taproot that is able to lift trace elements from great soil depths whilst also aiding drought tolerance. Recognised for its high iron content along with vitamins A and C, Sheeps Parsley can prove a valuable addition to grazing swards.

Flower Rich Grass Margin provide important habitat for invertebrates and birds.

PLEASE NOTE: mixtures are subject to change slightly.

FLOWER RICH MARGIN MIXTURE

80% GRASSES, 20% WILD FLOWERS (AB8, IPM2)

Sowing Rate: 16-20kg/ha

% Cultivar Species:

25% Slender Red Fescue	25% SSMG	12% Chewings Fescue
10% Crested Dogtail	5% Hard Fescue	3.25% Sainfoin
3% Vetch	3% Browntop Bent	2.5% Birdsfoot Trefoil
2% Black Medick	2% Red Clover	2% Black Knapweed (N)
1.3% Oxeye Daisy	1.25% Yarrow	1% Wild Carrot (N)
1% Plantain	0.5% Selfheal (N)	0.20% Musk Mallow (N)

BGM 1 WITH COCKSFOOT (AHL3, AHL4, IGL3)

Sowing Rate: 20kg/ha

% Cultivar Species:

45% Creeping Red Fescue	20% Cocksfoot	20% Tall Fescue
10% SSMG	5% Timothy	

BGM 2 NO COCKSFOOT (AHL3, AHL4, IGL3)

Sowing Rate: 20kg/ha

% Cultivar Species:

37% Creeping Red Fescue	22% Chewings Fescue	22% Tall Fescue
12% SSMG	7% Timothy	

BGM 4 WITH WILDFLOWERS & FINE GRASSES

90% GRASSES, 10% WILD FLOWERS (AB8, IPM2)

Sowing Rate: 16-20kg/ha

% Cultivar Species:

45% Creeping Red Fescue	15% Chewings Fescue	15% Hard Fescue
15% SSMG	2.5% Sainfoin	2.5% Vetch
1.5% Red Clover	1.25% Alsike Clover	0.75% Plantain
0.5% Birdsfoot Trefoil	0.25% Oxeye Daisy	0.25% Sheeps Burnet
0.25% Yarrow	0.25% Black Knapweed (N)	

BGM 6 FLOWER GRASS MARGIN MIXTURE

85% GRASSES, 15% WILD FLOWERS (AB8, GS4, IPM2, SAM3)

Sowing Rate: 20kg/ha

% Cultivar Species:

45% Creeping Red Fescue	15% Chewings Fescue	9% SSMG
9% Cocksfoot	6% Hard Fescue	3.75% Sainfoin
3.75% Vetch	3% Lucerne (inoculated)	1% Alsike Clover
1% Bentgrass	1% Plantain	1% Red Clover
0.5% Sheeps Burnet	0.5% Sheeps Parsley	0.25% Birdsfoot Trefoil
0.25% Yarrow		

*Species-Rich Grass & Species-Rich Wild Flowers are available separately or as a mixture of grasses (SRG) & flowers (SRWF) together in the following ratios:

Sowing Rate: 16kg/ha

85% SRG with 15% SRWF, Mixed to Order (AB8, IPM2)

SPECIES-RICH WILD FLOWERS (SRWF)* NATIVE

Sowing Rate: Various/ha

% Cultivar Species:

18% Black Knapweed (N)	15% Selfheal (N)	10% Oxeye Daisy (N)
10% Red Campion (N)	10% Ribwort Plantain (N)	10% White Campion (N)
10% Yellow Rattle (N)	4.5% Salad Burnet (N)	4% Sorrel (N)
4% Wild Carrot (N)	2.5% Lady's Bedstraw (N)	1% Birdsfoot Trefoil (N)
1% Black Medick (N)		

SPECIES-RICH GRASS (SRG)* (IGL3)

Sowing Rate: Various/ha

% Cultivar Species:

20% Red Fescue	20% SSMG	20% Browntop Bent
10% Meadow Fescue	10% Sheeps Fescue	10% Hard Fescue
10% Crested Dogtail		

Don't hesitate to contact us for more information or advice from an expert. We're here to help!

+44 (0) 7947 954 614

enquiries@rccrops.co.uk

www.rccrops.co.uk

LEGUME & HERB RICH MIXTURES

Legume and herb-rich mixtures provide an abundance of productive grazing for livestock and a habitat and food source for invertebrates and pollinators, supporting biodiversity. Herbal leys develop a beneficial soil structure through the increase of organic matter. This is due to the variety of species used and the length of time which they are left in the soil. These leys not only replace organic matter lost within a rotation but also supply a valuable forage crop for livestock as either grazing or taken for a cut of silage. Grasses offer the reliable, bulk forage of the ley.

PLEASE NOTE: mixtures are subject to change slightly.

FALLOW MIXTURES

LEGUME FALLOW MIXTURE WITH GRASS

2 YEAR (AB15, NUM2, NUM3) AB15 AGREEMENTS STARTING ON OR BEFORE 1ST JAN 2020

Sowing Rate: 30-40kg/ha

% Cultivar Species:

36% Perennial Ryegrass, 30% Creeping Red Fescue, 10% Crimson Clover, 10% Vetch, 5% Red Clover, 4% Lucerne (inoculated), 3% Alsike Clover, 1% Birdsfoot Trefoil, 1% Black Medick

NON GRASS LEGUME FALLOW MIXTURE

2 YEAR (AB15, NUM2, NUM3) AB15 AGREEMENTS STARTING ON OR AFTER 1ST JAN 2020

Sowing Rate: 15-20kg/ha

% Cultivar Species:

52% Vetch, 12% Alsike Clover, 12% Crimson Clover, 12% Lucerne (inoculated), 10% Red Clover, 1% Birdsfoot Trefoil, 1% Black Medick

HERBAL MIXTURES

LEGUME & HERB RICH MIXTURE (GS4, SAM3)

Sowing Rate: 30kg/ha

% Cultivar Species:

35% Perennial Ryegrass, 25% Creeping Red Fescue, 10% Festulolium, 7% Red Clover, 5.6% Sainfoin, 5% SSMG, 5% Timothy, 3% Alsike Clover, 1.93% Lucerne (inoculated), 1% Sheeps Burnet, 0.5% Birdsfoot Trefoil, 0.5% Plantain, 0.25% Yarrow, 0.2% Sheeps Parsley, 0.02% Black Knapweed (N)

HERBAL MEADOW (GS4, SAM3)

Sowing Rate: 30kg/ha

% Cultivar Species:

27% Perennial Ryegrass, 20% Festulolium, 13% Cocksfoot, 10% SSMG, 7% Red Clover, 6% Sainfoin, 5% Timothy, 5% Lucerne (inoculated), 3% Alsike Clover, 1% Fenugreek, 1% Chicory, 0.7% Plantain, 0.5% Birdsfoot Trefoil, 0.5% Sheeps Burnet, 0.25% Yarrow, 0.05% Sheeps Parsley

MULTI SPECIES LEGUME & HERB MIX (SAM3)

Sowing Rate: 30-35kg/ha

% Cultivar Species:

25% Int. Perennial Ryegrass, (T) 25% Late Perennial Ryegrass, 20% Late Perennial Ryegrass (T), 7% Timothy, 5% White Clover, 4% Plantain, 3% Creeping Red Fescue, 3% Red Clover, 2.5% Chicory, 2% Alsike Clover, 2% Meadow Fescue, 1% Tall Fescue, 0.3% Sheeps Burnet, 0.1% Sheeps Parsley, 0.1% Yarrow

MIXED HERBS

Sowing Rate: Variable/ha

% Cultivar Species:

26% Sainfoin, 23% Sheeps Burnet, 20% Plantain, 15% Sheeps Parsley, 13% Chicory, 3% Yarrow

SFI HERBAL LEGUME OVERSEEDING MIXTURE

Sowing Rate: 7-10kg/ha

% Cultivar Species:

25% Plantain, 23% Red Clover, 22% White Clover, 5% Alsike Clover, 5% Chicory, 5% Sheeps Burnet, 5% Sheeps Parsley, 5% Timothy, 4% Birdsfoot Trefoil, 1% Yarrow

SFI NO CHICORY HERBAL LEGUME OVERSEEDING MIXTURE

Sowing Rate: 7-10kg/ha

% Cultivar Species:

25% Plantain, 23% Red Clover, 22% White Clover, 9.5% Timothy, 5% Alsike Clover, 5% Sheeps Burnet, 5% Sheeps Parsley, 4% Birdsfoot Trefoil, 1% Yarrow, 0.5% Fenugreek

HERBAL MAX GOLD (NUM2)

Sowing Rate: 30kg/ha

% Cultivar Species:

28% Late Perennial Ryegrass (T), 15% Int. Perennial Ryegrass, 15% Late Perennial Ryegrass, 12% Red Clover, 9% Ecotain, 8% Chicory, 7% Timothy, 6% White Clover

HERBAL MAX SILVER (NUM2)

Sowing Rate: 30kg/ha

% Cultivar Species:

70% Int. Perennial Ryegrass (T), 10% Red Clover, 6% White Clover, 6% Plantain, 6% Timothy, 2% Sheeps Burnet

ANNUAL MIXTURES

ANNUAL FALLOW MIXTURE (SAM2, NUM3)

Sowing Rate: 15-20kg/ha

% Cultivar Species:

38% Vetch, 32% Linseed, 10% Crimson Clover, 5% Gold of Pleasure, 5% Sainfoin, 4% Phacelia, 4% White Mustard, 2% Lucerne (inoculated)

ANNUAL NECTAR MIXTURE (AHL1, SAM2)

Sowing Rate: 20kg/ha

% Cultivar Species:

25% Buckwheat, 25% Linseed, 20% Vetch, 15% Crimson Clover, 10% Berseem Clover, 4.6% Phacelia, 0.2% Black Knapweed, 0.2% Ag Yarrow

Don't hesitate to contact us for more information or advice from an expert. We're here to help!

+44 (0) 7947 954 614

enquiries@rccrops.co.uk

www.rccrops.co.uk

NECTAR RICH MIXTURES

Nectar Rich Mixtures provide colourful flowers, essential food sources and habitats from many pollinating insects.

PLEASE NOTE: mixtures are subject to change slightly.

BUTTERFLY & BUMBLEBEE MIXTURE (AB8, IPM2)

Sowing Rate: 16-20kg/ha

% Cultivar Species:

15% Creeping Red Fescue, 15% SSMG, 10% Browntop Bent, 10% Hard Fescue, 10% Sheeps Fescue, 6% Lucerne (inoculated), 5% Yorkshire Fog, 4% Hairy Vetch, 4% Birdsfoot Trefoil, 4% Kidney Vetch (N), 4% Alsike Clover, 2% Black Knapweed (N), 1% Plantain, 1% Tufted Hairgrass, 1% Common Agrimony (N), 1% Phacelia, 1% Red Campion (N), 1% Musk Mallow (N), 1% White Campion (N), 1% Oxeye Daisy, 1% Selfheal (N), 1% Cornflower (N), 1% Wild Carrot (N)

WF1 (AB1, AHL1)

Sowing Rate: 5-10kg/ha

% Cultivar Species:

40% Sainfoin, 10% Vetch, 5% Birdsfoot Trefoil, 5% Alsike Clover, 5% Yarrow, 5% Red Clover, 5% Lucerne (inoculated), 5% Black Medick, 4% Crimson Clover, 2.25% Corn Cockerle (N), 2% Oxeye Daisy, 2% Black Knapweed (N), 2% Selfheal (N), 1.5% Cornflower (N), 1.5% Sheeps Burnet, 1% Red Campion (N), 1% Corn Marigold (N), 1% Field Poppy (N), 1% Wild Carrot (N), 0.5% White Campion (N), 0.25% Musk Mallow (N)

NECTAR RICH BRONZE (AB1, AHL1, NUM2, NUM3)

Sowing Rate: 15kg/ha

% Cultivar Species:

40% Vetch, 30% Sainfoin, 12% Crimson Clover, 7.6% Lucerne (inoculated), 6% Altaswede, 4% Alsike Clover, 0.2% Yarrow, 0.2% Black Knapweed (N)

ANNUAL NECTAR MIXTURE (AHL1, SAM2)

Sowing Rate: 20kg/ha

% Cultivar Species:

25% Buckwheat, 25% Linseed, 20% Vetch, 15% Crimson Clover, 10% Berseem Clover, 4.6% Phacelia, 0.2% Black Knapweed, 0.2% Ag Yarrow

NECTAR RICH GOLD (AB1, AHL1, NUM2, NUM3)

Sowing Rate: 15kg/ha

% Cultivar Species:

33% Sainfoin, 25% Vetch, 10% Red Clover, 8% Alsike Clover, 8% Lucerne (inoculated), 6.5% Crimson Clover, 4% Birdsfoot Trefoil, 4% Black Medick, 1% Black Knapweed (N), 0.5% Yarrow

STEWARDSHIP SELECTOR

Countryside Stewardship Scheme Description			
CSS Higher Tier	CSS Mid Tier	CSS Code	CSS Option Title
Arable			
✓	✓	AB1	Nectar flower mixture
✓	✓	AB2	Basic overwinter stubble
✓	✓	AB3	Beetle banks
✓	✓	AB7	Wholecrop cereals
✓	✓	AB8	Flower-rich margins & plots
✓	✓	AB9	Winter bird food
✓	✓	AB13	Brassica fodder crop
✓	✓	AB15	Two year sown legume fallow
✓	✓	AB16	Autumn sown bumblebird mix
Grassland			
✓	✓	GS1	Take field corners out of field management
✓	✓	GS3	Ryegrass seed-set as winter food for birds
✓	✓	GS4	Legume and herb-rich swards
✓		GS8	Creation of species-rich grassland
✓		GS14	Creation of grassland for target features
Organic			
✓	✓	OP1	Overwintered stubble
✓	✓	OP2	Wild bird seed mixture
✓	✓	OP4	Multi-species ley
✓	✓	OP5	Undersown cereal
Soil and Water			
✓	✓	SW1	4-6m buffer strip on cultivated land
✓	✓	SW2	4-6m buffer strip on intensive grassland
✓		SW3	In-field grass strips
✓	✓	SW4	12-24m watercourse buffer strip on cultivated land
✓	✓	SW5	Enhanced management of maize crops
✓	✓	SW6	Winter cover crops
✓	✓	SW7	Arable reversion to grassland with low fertiliser input
✓	✓	SW8	Management of intensive grassland adjacent to a watercourse
Wetlands			
✓	✓	WT1	Buffering in-field ponds and ditches in improved grassland
✓	✓	WT2	Buffering in-field ponds and ditches in arable land

SFI Scheme Description	
SFI Code	SFI Option Title
SFI Actions for Soils	
SAM2	Multi-Species Winter Cover Crops
SAM3	Herbal Leys
SFI Actions for Integrated Pest Management	
IPM2	Flower-Rich Grass Margins, Blocks or Strips
IPM3	Companion Crop on Arable and Horticultural Land
SFI Actions for Nutrient Management	
NUM2	Legumes on Improved Grassland
NUM3	Legume Fallow
SFI Actions for Farmland Wildlife on Arable and Horticultural Land	
AHL1	Pollen and Nectar Flower Mix
AHL2	Winter Bird Food on Arable and Horticultural Land
AHL3	Grassy Field Corners and Blocks
AHL4	4m to 12m Grass Buffer Strips on Arable and Horticultural Land
SFI Actions for Farmland Wildlife on Improved Grassland	
IGL2	Winter Bird Food on Improved Grassland
IGL3	4m to 12m Grass Buffer Strips on Improved Grassland

Ask for bespoke mixtures tailored to your requirements

** Use only organic seed mixes on OELS-eligible land. Where this is not possible, you must contact your Organic Inspection body for a derogation.*

DISCLAIMER:

Any information provided in this table is given in good faith and to the best of our knowledge. If you would like further advice please contact your local Natural England Advisor.

	Your Countryside Mixtures	SFI Scheme Code	CSS Scheme Code
Buffer Strips	BGM 1 With Cocksfoot	AHL3, AHL4, IGL3	AB3, SW1, SW2, SW3, SW4, SW7, SW8, WT1, WT2
	BGM 2 No Cocksfoot	AHL3, AHL4, IGL3	AB3, SW1, SW2, SW3, SW4, SW7, SW8
	Species Rich Grass	IGL3	AB3, SW1, SW2, SW3, SW4, SW7, SW8, WT1, WT2
	Legume, Herb Rich Mixture & Herbal Meadow	SAM3, NUM3, IGL2	GS1, GS4, GS14, SW1, SW2, SW3, SW4, SW7, SW8, WT1, WT2
	Multi Species Legume & Herb	SAM3, NUM3, IGL2	GS1, GS4, GS14, SW1, SW2, SW3, SW4, SW7, SW8, WT1, WT2
	See ForageMax Brochure for more grass alternatives		GS3, SW1, SW2, SW3, SW4, SW7, SW8, WT1, WT2
Cover Crops	Arable Silage Mixtures		AB7
	Barley		AB7
	Mustard		AB2, AB7
	Fodder Radish		AB2, AB7
	Kwik Fix	SAM2	AB2, AB7
	Annual Fallow Mix	SAM2, NUM3	SW5, SW6
	N-Joy	SAM2	SW5, SW6
	N-Graze	SAM2	SW5, SW6
	N-Rich	SAM2	SW5, SW6
	N-Trap	SAM2, IPM3	SW5, SW6
	N-Liven	SAM2	SW5, SW6
	N-Hance	SAM2	SW5, SW6
	N-Scent	SAM2, IPM3	SW5, SW6
Organics	Organic Mustard		OP1
	Organic Fodder Radish		
	Organic Wild Bird Seed Mix		OP2
	Organic Nectar Flower Mix		
	OrganoMax 70% Dual Purpose		OP5
Wild Bird Seed Mixtures	WBS 1, 2, 3, 4	AHL2	AB9
	Feed & Cover Mix	AHL2	AB9
	Broadshot	AHL2	AB9
	Northern WBS 1	AHL2	AB9
	Northern WBS 2	AHL2	AB9
	WBA 1, 2		AB16
	Farmland Bird & Northern WBS 2 No Cereal	AHL2	AB9
Brassicac	Kale		AB13
	Forage Rape		AB13
	Swedes		AB13
	Stubble Turnips		AB13
	Zoom		AB13
	Rapid Root	SAM2	AB13
	Winter Graze	SAM2	AB13
Nectar Rich Mixtures	Legume Fallow Mixture with Grass	NUM2, NUM3	AB15 starting on or before 1.1.20
	Non Grass Legume Fallow Mixture	NUM2, NUM3	AB15 starting on or after 1.1.21
	Butterfly and Bumblebee Mix	IPM2, AHL3, AHL4, IGL3	AB8, GS8, GS14
	Flower Rich Margin Mixture	IPM2	AB8, GS8, WT1, WT2
	Nectar Rich Gold & Nectar Rich Bronze	AHL1, NUM2, NUM3	AB1
	WF1	AHL1	AB1
	SRG with 15% wildflowers	IPM2, AHL3, AHL4, IGL3	AB8, GS8, GS14, SW1, SW2, SW3, SW4, SW7, SW8, WT1, WT2
	BGM 6 Flower Grass Margin	SAM3, IPM2, AHL3, AHL4, IGL3	GS4 AB8
	BGM 4 with wildflowers	IPM2, AHL3, AHL4, IGL3	AB8, GS8, GS14, SW1, SW2, SW3, SW4, SW7, SW8, WT1, WT2
	Annual Nectar Mixture	SAM2, AHL1	AB15, GS8, SW1, SW2, SW3 SW4, WT1, WT2

WILD BIRD FEED



RC offer Supplementary Wild Bird Seed, helping our wildlife through the winter months, also fitting in with many farming schemes.

With a range of over 30 different seeds which can be either used straight or part of a mix, we can supply.

Please get in touch, here at RC we believe in looking after the environment as we only have one of them.

*minimum order 300kg | Mix-and-Match



WHITE DARI



WHITE MILLET



PEANUTS GARDE I



RED DERI



RED MILLET



BLACK RAPE



CANARY SEED



BLUE PEAS



BARLEY



KIBBLED MAIZE



MAPLE PEAS



YELLOW PEAS



SAFFLOWER



WHEAT



NYJER SEED



BLACK SUNFLOWERS



NAKED OATS



WHOLE MAIZE



SMALL STRIPED SUNFLOWER



SUNFLOWER HEARTS BAKERY GRADE



TIC BEANS

WILD BIRD SEED



HIGH IMPACT & WILD FLOWERS

Our latest line of seed, RC Crops has become a reliable and knowledgeable supplier of wild flower seeds for commercial and residential use.

Combining our specialist knowledge, supplier relationships and experience in delivering the very best quality, you can be sure of RC Crops meeting your wild flower needs. We supply both Colour Boost and Pro Flora, please browse our options below with easy online ordering or contact us if you have any questions.



Our Colour Boost range has been designed for maximum floral impact, incorporating both wild flower and garden flowering species. Colour Boost mixtures establish rapidly to deliver a dazzling floral display throughout the year whilst providing welcome food and shelter for wildlife.

Add colour, biodiversity and interest to your space with Colour Boost.

- Easy to grow with relatively low levels of input
- Cost-effective way of improving aesthetic of appeal of space
- Robust fast-flowering mixtures with long-lasting results
- Improve engagement and interaction with the environment
- Reduce water and chemical consumption
- Improve biodiversity and create habitats for wildlife



CARNIVAL (FORMERLY CB1)

Sowing Rate: 3-5g/m²

Designed to create a robust and attractive display in any park, public open space or golf course. This flower mixture will provide a dazzling annual display. Quick to establish with a long flowering period from eight weeks after sowing up until the first frosts.



BLUSH (FORMERLY CB4)

Sowing Rate: 3-5g/m²

Pale pinks through to deep reds, Blush provides a beautifully warm mix of flowers from this colour palette. Designed for great succession flowering from late spring until well into the autumn.



FLORAL CARPET (FORMERLY CB2)

Sowing Rate: 3-5g/m²

Lower growing seasonal annuals mixture, designed to create a robust and attractive display in areas where final growing height is of paramount importance. This is particularly relevant when sowing near visibility splays and sight lines on road junctions. This lower growing mixture will provide rich blooms throughout the season, perfect for enhancing any street scene. Quick to establish with a long flowering period from eight weeks after sowing up until the first frosts.



CLASSICAL

Sowing Rate: 3-5g/m²

Deep blues through to pure whites gives this trusted colour combination an everlasting appeal. This mixture works especially well in a more formal setting, or providing the transition between a formal and informal landscape.



SKYSCRAPER

Sowing Rate: 3-5g/m²

A taller growing mixture containing classics such as Cosmos and Zinnia. Created for areas where a larger or more open surrounding environment requires a taller growing mixture to deliver the same impact. The taller more robust nature of this mixture also provides fantastic shelter and a habitat for small mammals, invertebrates and pollinating insects.



CHAMELEON (FORMERLY CB6)

Sowing Rate: 3-5g/m²

A brilliantly diverse mixture of over 40 species and subspecies providing a fantastic range of colours and forms. This mixture is constantly changing throughout the growing season. Summer Chameleon has been a consistent performer on our trial grounds giving a fantastic show throughout the season.



BIODIVERSITY (FORMERLY CB3)

Sowing Rate: 3-5g/m²

A blend of seasonal Annuals, Biennials and Perennials designed to attract a host of varied fauna including pollinating insects. The composition of species is wide and ensures a good adaptability to different growing conditions and good colour during the first year. The colour scheme of the mix changes during the season depending on which species are in bloom at the time.



COLOUR BOOST POPPY

Sowing Rate: 1g/m²

Creating an evocative image in drifts of bright red. Whether it's just for show or creating a display to remember those heroes no longer with us, the simple poppy makes a great choice. Poppy can also be successfully sown in the autumn.



HONEYBEE & BUTTERFLY

Sowing Rate: 3-5g/m²

Designed specifically with key pollinators in mind, a really attractive mixture doing a vital job in providing a nectar source for our bee population and other pollinating insects. This mixture will provide a spectacular display in year one, with species such as Foxglove and Sweet William flowering in year two if the mixture is left.

SECURING THE FUTURE: We should all be playing our part in securing the future of our wildlife and plant populations - the first step is to create the perfect habitat. By choosing our native wild flower seeds, you can be assured of the benefits it will bring to the environment and the crucial role that has in attracting and sustaining wildlife.

ROBUST AND REGENERATIVE: Wild flowers have long played a key role in site regeneration and landscaping projects, bringing biodiversity to urban areas as well as domestic or public green places.

VITAL CONSERVATION: Not only are wild flowers great at improving visual diversity, they are vital for conservation and can help improve filtration rates and profiles below the ground - aiding in formation of new habitats



PRO FLORA 1 - CORNFIELD ANNUALS

Sowing Rate: 5g/m²

A traditional range of cornfield annuals, suitable for sowing in the spring or autumn, and providing a colourful show in the first year. Suited to a range of soil types, Pro Flora 1 can be harrowed and re-sown in subsequent years, or alternatively, the grasses can be left and managed with either a 'long grass' policy or incorporated into a more regular mowing regime.



PRO FLORA 2 - ACID SOILS (BELOW PH6)

Sowing Rate: 5g/m²

A species rich grassland mix suited for a range of soil types with a neutral to acidic pH, often found in upland regions. On very thin soils, establishment can be slow and the grass growth thinner, which is ideal for the longer term development of the flowering species in the Pro Flora 2 mix.



PRO FLORA 3 - DAMP SOILS

Sowing Rate: 5g/m²

This species rich grassland mix lends itself well to most soil types commonly found in lowland meadow situations. Pro Flora 3 contains a wide range of flowering species that will flourish in a variety of situations



PRO FLORA 4 - CALCAREOUS SOILS (CHALK)

Sowing Rate: 5g/m²

Calcareous lime rich soils can often be free draining and lower in nutrients. On very thin soils, establishment can be slow and the grass growth thinner, which is ideal for the longer term development of the flowering species in the Pro Flora 4 mix



PRO FLORA 5 - WET SOILS

Sowing Rate: 5g/m²

This mixture is ideal for low lying heavier soils represented best by lowland water meadows and flood plains that experience seasonal flooding. These soils can have higher nutrient levels, so careful management of the grass species is key to the successful establishment of Pro Flora 5.



PRO FLORA 6 - DRY SOILS

Sowing Rate: 5g/m²

Drier soils are often lower in nutrients providing an ideal root zone for wild flower species. Pro Flora 6 can be used on maintainable slopes with lower available moisture as well as larger areas of lighter soil.



PRO FLORA 7 - HEDGEROW & LIGHT SHADE

Sowing Rate: 5g/m²

Lightly or partially shaded areas present challenges for growth as amounts of light and sunshine can vary dramatically. Contained within Pro Flora 7 are species that will thrive in an environment of this type.



PRO FLORA 8 - LEGACY GENERAL PURPOSE

Sowing Rate: 5g/m²

Lightly or partially shaded areas present challenges for growth as amounts of light and sunshine can vary dramatically. Contained within Pro Flora 8 are species that will thrive in an environment of this type.



PRO FLORA 9 - HERITAGE GENERAL PURPOSE

Sowing Rate: 5g/m²

A diverse mixture containing over 40 species, ideal on a range of sites and soils, especially where the establishment of a greater number of species is required. Pro Flora 9 contains annuals making it ideal for sites where there is to be no 'year one' mowing as part of the maintenance provision, allowing the annuals to flower providing colour in the first year.



PRO FLORA 10 - GENERAL PURPOSE PLUS ANNUALS

Sowing Rate: 5g/m²

A good all round mixture suitable for a whole range of sites and soils, containing the same range of robust flower species found in Pro Flora 8. The inclusion of annuals makes it ideal for sites where there is to be no 'year one' mowing as part of the maintenance regime, allowing the annuals to flower providing colour in the first year. Pro Flora 10 is our most popular '10/90 mix' and offers great value for money.



PRO FLORA 11 - WOODLAND & GENERAL SHADE

Sowing Rate: 5g/m²

Heavy shade provides a challenging environment for the establishment of wild flowers but the key shade indicator species used in Pro Flora 11 are well placed to thrive. This mixture is recommended for areas that are already subject to an element of shade.



PRO FLORA 12 - WATER MARGINS & POND EDGES

Sowing Rate: 5g/m²

Establishing mixtures on water margins can be difficult due to fluctuating water levels. Try to sow Pro Flora 12 when weather conditions look stable, and only use this mix where there is a constant supply of moisture. This is essential for the indicator species to thrive.



PRO FLORA 13 - SPECIES RICH LAWN & LANDSCAPE

Sowing Rate: 5-10g/m²

With demand for improved biodiversity on all major landscape projects, increasing the species count in the largest soft landscaped surface of the scheme can be overlooked. Pro Flora 13 is suited to a varied management regime of cutting height and frequency. This flexibility allows mowing every couple of weeks at 75-100mm in a more intensively managed area, to a conventionally managed, species rich, grassland receiving just one/two cuts a year. The greater amount of time between cuts, the greater the number of species will flower.



PRO FLORA 14 - TALL HERB & TUSSOCK

Sowing Rate: 5g/m²

Species with varying heights and structures provide a habitat for a wide range of insects, small mammals, amphibians and reptiles. Taller growing species also help visually to blend more traditional parkland/meadow mixtures with woodland and natural scrub. Tall Herb grassland provides a vital food source late into the year to sustain invertebrates which, together with the seeds, provides a food source for birds. Maintenance differs from that of conventional species rich wild flower grassland. Ideally, divide the area into three parts and mow one part per year in rotation so as not to lose the essential habitat that has been created. Leave the arisings in large piles on site; this very coarse hay plays an important part in habitat creation, providing egg laying and hibernation sites for reptiles.



PRO FLORA 15 - POLLINATOR

Sowing Rate: 5g/m²

With increased pressure upon habitats for pollinating insects, Pro Flora 15 brings together a mix of species specifically to attract pollinators. This mix of native origin wild flowers and fine leaved non-competitive grasses will thrive on a wide range of soils with a prolonged flowering period, perfect for bees, butterflies and other pollinators. This mixture will also benefit other predators higher up the food chain.



PRO FLORA 16 - COASTAL

Sowing Rate: 5g/m²

Many of our coastal areas are under threat from the sea and the activities of humans. Pro Flora 16 provides a solution for either restoring areas near the coast or improving areas of poor quality land. Regenerating these areas can also help with erosion control and improve biodiversity, providing habitats for coastal dwelling insects and invertebrate species. With the careful selection of location, this mix also provides an opportunity for coastal golf courses to create habitats and improve biodiversity.



PRO FLORA 110 - ECONOMY GENERAL PURPOSE

Sowing Rate: 5g/m²

A good all round value for money mix, suitable for a range of sites and soils. The inclusion of annuals makes it ideal for sites where there is to be no 'year one' mowing as part of the maintenance regime, allowing the annuals to flower providing colour in the first year. Pro Flora 110 is our most popular '5/95 mix'.

EQUINE / AMENITY MIXTURES

RC crops offer a full range of seed for horse paddocks, racecourses, polo pitches and all other sporting pitches whether it be the finest cricket wicket you are after or the perfect golf fairway. We as a supplier can advise which product will suit best. We have listed our favourite and best sellers however if you need any further information on specialist seed then please do not hesitate to contact us and we will strive to make sure we find the seed to suit your preferences.

EQUINE / AMENITY MIXTURES

HORSE PADDOCKS

RC offer a wide range of Equine mixtures. We have included our top sellers but if you require specialised grass then please do not hesitate to contact us.

PM65 HEAVY WEAR - WINTER SPORTS, RACE COURSES AND POLO GROUNDS

This mixture is designed for new courses/grounds and end of season renovation. The deeper root system, improved colour and incredible disease resistance of Tetragame 4turf® tetraploid ryegrass combined with the improved wear tolerance of the diploid ryegrasses deliver a high performance turf.

Sowing Rate: 35-50g/m²

Characteristics / Quality:

- Overseeding: 25 - 50g/m²
- Mowing height: 75-100mm

% Cultivar Species:

30% Tetragame 4turf® Tetraploid Perennial Rye,
25% Columbine Perennial Rye,
25% Gladys Perennial Rye,
20% Dakisha Smooth Stalked Meadow Grass



HORSEMAX Paddock - 5 YEARS PLUS

Long term horse grazing with an option to produce a quality hay crop. HorseMax Paddock is designed using diploid Perennial Ryegrasses, Timothy and Creeping Red Fescue. Sward density is a key consideration as both grazing and winter feed are often produced from the same area. Timothy is much favoured by horses and in particular gives hay a sweet smell and is very palatable. Creeping Red Fescue is key to binding the sward together and because of its growth habit quickly repairs the turf when damaged by hooves.

Sowing Rate: 37-50kg/ha

Characteristics / Quality:

- Very good sward density and very hard wearing
- Suitable for a hay crop if desired
- Varieties selected to reduce incidents of laminitis
- An extremely versatile equine mixture
- Suitable for cutting and grazing

% Cultivar Species:

15% Calvano 1 Intermediate Perennial Rye, 30% Boyne Intermediate Perennial Rye, 25% Taddington Late Perennial Rye, 20% Maxima Creeping Red Fescue, 10% Comer Timothy

LANDSCAPING & LAWNS

RC offer a wide range of Landscaping & Lawn grass seed. We have included our top sellers but if you need specialised grass then please do not hesitate to contact us.

PM 50 QUALITY LAWN - HIGH QUALITY, HARD WEARING LAWN

An excellent mixture, fine in appearance and hard wearing with excellent colour. The improved new cultivars ensure, a shade tolerant, low maintenance turf, with good disease resistance, keeping future maintenance costs to the minimum. The inclusion of our unique 4turf® Tetraploid ryegrass Fabian delivers fast establishment, improved colour, increased drought tolerance and incredible disease resistance. A very successful mixture for both private and local authority use, on housing and industrial developments where a high quality and durable turf is called for.

Sowing Rate: 35-50g/m²

Overseeding: 15-25g/m² | Mowing height: down to 10mm

% Cultivar Species: 10% Tetragame 4turf® Tetraploid Perennial Rye, 20% Chardin Perennial Rye, 10% Dickens Perennial Rye, 40% Sergei Strong Creeping Red Fescue, 10% Wagner Chewings Fescue, 10% Smirna Slender Creeping Red Fescue



PM 51 GREENSCAPE - HARD WEARING LAWNS WITH RYE GRASS

A hard wearing mixture that will establish rapidly. Ideal for general purpose landscaping and lawns. Our unique Double 4turf® Tetraploid ryegrass delivers fast establishment, improved colour, increased drought tolerance and incredible disease resistance. Improved performance and reduced management costs.

Sowing Rate: 35-50g/m²

Overseeding: 25-50g/m²

Mowing height: down to 13mm

% Cultivar Species:

30% Double 4turf® Tetraploid Perennial Rye,
20% Esquire Perennial Ryegrass,
50% Maxima Strong Creeping Red Fescue

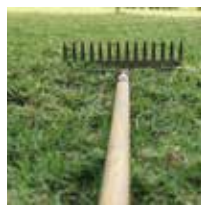
PM 70 RECREATION - SPORTS FIELDS, TEES & FAIRWAYS AND HARD WEARING LANDSCAPE TURF

A versatile mixture that produces a very hard wearing sward with a high shoot density suitable for winter and summer games. 4Turf® tetraploid ryegrass delivers the fastest possible establishment, important for the rapid renovation of worn turf, plus improved disease resistance and drought tolerance thanks to the deeper root system. The perfect mixture to bring your venue back to life following a summer tournament or festival.

Sowing Rate: 35-50g/m²

Overseeding: 25-50g/m² | Mowing height: down to 12 mm

% Cultivar Species: 10% Tetragame 4turf® Tetraploid Perennial Rye, 25% Double 4turf® Tetraploid Perennial Ryegrass, 10% Chardin Perennial Rye, 25% Esquire Perennial Rye, 30% Sergei Strong Creeping Red Fescue



PRO TURF WITH RYE - HIGH QUALITY LANDSCAPE TURF

The inclusion of New Fabian 4turf® tetraploid ryegrass introduces the latest genetics, delivering fast establishment, improved colour, drought tolerance, nitrogen efficiency and incredible disease resistance! A top class mixture providing a high quality, hard wearing turf. The inclusion of Chardin & Claudine ryegrass combines all of the benefits associated with modern turf perennials, incredible fineness of leaf, shoot density and exceptional visual merit.

Sowing Rate: 25g/m²

Mowing height: down to 20mm

Harvest: 6-12 months

% Cultivar Species:

10% Chardin Perennial Rye,
10% Chloe Perennial Rye,
5% Fabian 4turf® Tetraploid Perennial Rye,
35% Rossinante Strong Creeping Red Fescue,
10% Nigella Slender Creeping Red Fescue,
10% Esparina Chewings Fescue,
20% Dakisha Smooth Stalked Meadow Grass

PRO TURF 4 WITHOUT RYE - FINE TURF

A mixture of the best varieties ensures the production of a truly first class traditional lawn turf. An important pre requisite is a clean seed bed, free from coarse species, so that the full benefit of the short, fine varieties can be seen.

Sowing Rate: 25g/m²

Mowing height: 15-25mm | Harvest: 6-12 months

% Cultivar Species: 25% Nigella Slender Creeping Red Fescue, 25% Seroa Slender Creeping Red Fescue, 25% Humboldt Chewings Fescue, 25% Bogart Chewings Fescue



PLEASE NOTE: mixtures are subject to change slightly.

AMENITY SEED

PLEASE NOTE: Some mixtures may have slight variances but will always excel in requirement.

PM5 - ECONOMY GREEN

GOLF GREENS & BOWLING GREENS
Sowing rate: 35g/m²
Overseeding: 25g/m²
Mowing height: down to 5mm
% Cultivar Species:
40% Wagner Chewings Fescue,
40% Smirna Slender Creeping Red Fescue,
20% Highland Browntop Bent

PM20 - FINETURF

TEES, FAIRWAYS & HIGH QUALITY FINE LAWNS (WITHOUT RYE)
Sowing rate: 35-50g/m²
Overseeding: 15-25g/m²
Mowing height: down to 10mm
% Cultivar Species:
20% Wagner Chewings Fescue,
20% Smirna Slender Creeping Red Fescue,
60% Sergei Strong Creeping Red Fescue

PM27 - ECOSWARD PLUS

LOW MAINTENANCE LANDSCAPE MIX WITH CLOVER & RYEGRASS
Sowing rate: 25g/m²
Overseeding: 25g/m²
Mowing height: 13-25mm
% Cultivar Species:
50% DOUBLE tetraploid perennial rye,
35% SERGEI strong creeping red fescue,
10% CALLIOPE chewings fescue,
5% MICROCLOVER

PM36 - WICKET

CRICKET WICKET, TENNIS & TEE RENOVATION
Sowing rate: 35-75g/m²
Overseeding: 25-75g/m²
Mowing height: down to 5mm
% Cultivar Species:
30% Chloe Perennial Rye,
50% Chardin Perennial Rye,
20% Dickens Perennial Rye

PM51 - GREENSCAPE

HARD WEARING LAWNS (WITH RYEGRASS)
Sowing rate: 35-50g/m²
Overseeding: 25-50g/m²
Mowing height: down to 13mm
% Cultivar Species:
30% Double 4turf[®] Tetraploid Perennial Rye,
20% Esquire Perennial Ryegrass,
50% Maxima Strong Creeping Red Fescue

PM70 - RECREATION

SPORTS FIELDS, TEES, FAIRWAYS & HARD WEARING LANDSCAPE TURF
Sowing rate: 35-50g/m²
Overseeding: 25-50g/m²
Mowing height: down to 12mm
% Cultivar Species:
10% Tetragame 4turf[®] Tetraploid Perennial Rye,
25% Double 4turf[®] Tetraploid Perennial Ryegrass,
10% Chardin Perennial Rye,
25% Esquire Perennial Rye,
30% Sergei Strong Creeping Red Fescue

PM82 - MICROCLOVER SPORT

SPORTS & PLAYING FIELDS (REDUCED INPUT COSTS)
Sowing rate: 25-50g/m²
Overseeding: 15-50g/m²
Mowing height: down to 25mm
% Cultivar Species:
30% Platinum Perennial Ryegrass,
40% Double 4turf[®] Tetraploid Perennial Ryegrass,
25% Esquire Perennial Ryegrass,
5% Microclover

PM105 - FERTILITY

FERTILITY BUILDING PIONEER MIX
Sowing rate: 5g/m²
% Cultivar Species:
15% Alsike White Clover,
15% Red Clover,
25% White Clover,
20% Yellow Trefoil,
25% Birdsfoot Trefoil

PM10 - TRADITIONAL GREEN

GOLF GREENS & BOWLING GREENS
Sowing rate: 35g/m²
Overseeding: 25g/m²
Mowing height: down to 5mm
% Cultivar Species:
25% Esparina Chewings Fescue, 15% Bogart Chewings Fescue, 20% Sarolea Slender Creeping Red Fescue, 20% Absolom Slender Creeping Red Fescue, 10% Jorvik Browntop Bent, 5% Manor Browntop Bent

PM25 - GRO-SLOW

LOW MAINTENANCE, POOR SOILS, EMBANKMENTS & GOLF ROUGH
Sowing rate: 25-50g/m² (4g/m² when sowing with wild flora)
Overseeding: 15-25g/m²
Mowing height: 20mm or 2x/year to approx 100mm
Unmown height: approx 150-200mm (excl. flower heads)
% Cultivar Species:
10% Samanta Slender Creeping Red Fescue,
45% Maxima Strong Creeping Red Fescue,
30% Dumas Hard Fescue, 10% Crested Dogtail,
5% Highland Browntop Bent

PM28 - WETLAND

DAMP & WATERLOGGED SOILS
Sowing rate: 25-35g/m²
Overseeding: 25g/m²
Mowing height: as required
% Cultivar Species:
10% Dakisha Smooth Stalked Meadow Grass,
20% Maxima Strong Creeping Red Fescue,
10% Esquire Perennial Rye,
10% Teno Small Leaved Timothy,
10% Crested Dogtail, 40% Essential Tall Fescue

PM40 - TEE AND FAIRWAY

TEES, FAIRWAYS & CRICKET OUTFIELDS (NO RYEGRASS)
Sowing rate: 35-50g/m² Overseeding: 15-25g/m²
Mowing height: down to 12mm
% Cultivar Species:
20% Rossinante Strong Creeping Red Fescue,
25% Sergei Strong Creeping Red Fescue,
20% Sarolea Slender Creeping Red Fescue,
10% Esparina Chewings Fescue, 20% Wagner Chewings Fescue, 5% Dumas Hard Fescue

PM52 - GREENFINE

FINE LAWNS (NO RYEGRASS)
Sowing rate: 35-50g/m²
Overseeding: 25-50g/m²
Mowing height: down to 13mm
% Cultivar Species:
10% Wagner Chewings Fescue,
20% Smirna Slender Creeping Red Fescue,
70% Maxima Strong Creeping Red Fescue

PM79 - PLAYING FIELD

SPORTS FIELD RENOVATION
Sowing rate: 35-75g/m²
Overseeding: 25-75g/m²
Mowing height: down to 25mm
% Cultivar Species:
50% Double 4turf[®] Tetraploid Perennial Ryegrass,
40% Platinum Perennial Rye,
30% Esquire Perennial Rye

PM85 - ROAD VERGE

ROAD VERGES
Sowing rate: 10-20g/m²
Overseeding: 10g/m²
Mowing height: as necessary or 2x/year to 75-100mm
% Cultivar Species:
25% Double 4turf[®] Tetraploid Perennial Ryegrass,
40% Maxima Strong Creeping Red Fescue,
15% Smirna Slender Creeping Red Fescue,
15% Dumas Hard Fescue,
2.5% Highland Browntop Bent,
2.5% Galway Small White Clover

PM120 - SLOWGROWTH

LANDSCAPE, PARKLAND & PLAY AREAS
Sowing rate: 35-50g/m²
Overseeding: 25g/m²
Mowing height: 12-50mm as necessary
% Cultivar Species:
60% Claudine Perennial Rye,
35% Sarolea Slender Creeping Red Fescue,
5% Highland Browntop Bent

PM13 - FINE FESCUE

HIGH QUALITY GREENS, TEES & FAIRWAYS - FESCUE OVERSEEDING
Sowing rate: 35-50g/m²
Overseeding: 15-25g/m²
Mowing height: down to 6mm
% Cultivar Species:
15% Bogart Chewings Fescue,
35% Esparina Chewings Fescue,
20% Absolom Slender Creeping Red Fescue,
30% Sarolea Slender Creeping Red Fescue

PM25R - GRO-SLOW PLUS

LOW MAINTENANCE, POOR SOILS & EMBANKMENTS
Sowing rate: 25-50g/m² Overseeding: 15-25g/m²
Mowing height: 20mm or 2x/year to approx 100mm
Unmown height: approx 150-200mm (excl. flower heads)
% Cultivar Species:
15% Double 4turf[®] Tetraploid Perennial Ryegrass,
10% Samanta Slender Creeping Red Fescue,
40% Maxima Strong Creeping Red Fescue,
20% Dumas Hard Fescue, 10% Crested Dogtail,
5% Highland Browntop Bent

PM29 - ALL SEASON

DROUGHT TOLERANCE
Sowing rate: 25-35g/m²
Overseeding: 25g/m²
Mowing height: down to 10mm
% Cultivar Species:
25% Debussy Tall Fescue,
75% Essential Tall Fescue

PM45 - TEE AND FAIRWAY PLUS

TEES, FAIRWAYS, CRICKET OUTFIELDS & DRIVING RANGES (WITH RYEGRASS)
Sowing rate: 35-50g/m²
Overseeding: 15-25g/m²
Mowing height: down to 12mm
% Cultivar Species:
35% Chardin Perennial Rye,
15% Rossinante Strong Creeping Red Fescue,
20% Sergei Strong Creeping Red Fescue,
10% Archibal Slender Creeping Red Fescue,
20% Esparina Chewings Fescue

PM60 - GREENSHADE

SHADED CONDITIONS (NO RYEGRASS)
Sowing rate: 35-50g/m²
Overseeding: 25-50g/m²
Mowing height: down to 25mm
% Cultivar Species:
10% Sabrena 1 Rough Stalked Meadow Grass,
30% Wagner Chewings Fescue,
20% Smirna Slender Creeping Red Fescue,
40% Sergei Strong Creeping Red Fescue

PM80 - RENOVATOR

SPORTS FIELD RENOVATION
Sowing rate: 35-75g/m²
Overseeding: 25-75g/m²
Mowing height: down to 25mm
% Cultivar Species:
25% Tetragame 4turf[®] Tetraploid Perennial Rye,
25% Chardin Perennial Rye,
30% Platinum Perennial Rye,
20% Columbine Perennial Rye

PM90 - COASTAL

COASTAL SITES
Sowing rate: 35g/m²
Overseeding: 25g/m²
Mowing height: down to 12mm
% Cultivar Species:
20% Double 4turf[®] Tetraploid Perennial Ryegrass,
25% Smirna Slender Creeping Red Fescue,
22% Maxima Strong Creeping Red Fescue,
20% Dumas Hard Fescue,
10% Saltmarsh Grass,
3% Kromi Creeping Bent

PM125 - CLEARSKY

AIRPORT LANDSCAPE & BIRD STRIKE MIX
Sowing rate: 20g/m²
Overseeding: 10g/m²
Mowing height: 150mm optimum height requirement
% Cultivar Species:
20% Debussy Tall Fescue,
75% Essential Tall Fescue,
5% Quickston Annual Ryegrass

PM15 - GREEN ALLBENT

GREENS RENOVATION MIXTURE (ALL BENT)
Sowing rate: 10g/m²
Overseeding: 5g/m²
Mowing height: down to 4mm
% Cultivar Species:
25% Manor Browntop Bent,
25% Arrowtown Browntop Bent,
50% Jorvik Browntop Bent

PM26 - ECOSWARD

LOW MAINTENANCE LANDSCAPE MIX (WITH CLOVER)
Sowing rate: 25g/m²
Overseeding: 25g/m²
Mowing height: 13-25mm
% Cultivar Species:
20% Wagner Chewings Fescue,
15% Samanta Slender Creeping Red Fescue,
50% Sergei Strong Creeping Red Fescue,
10% Evora Smooth Stalked Meadow Grass,
5% Microclover

PM35 - UNIVERSAL

CRICKET SQUARES, TEES & TENNIS COURTS
Sowing rate: 25-35g/m²
Overseeding: 25-50g/m²
Mowing height: down to 5mm
% Cultivar Species:
35% Claudine Perennial Ryegrass,
35% Chardin Perennial Ryegrass,
10% Absolom Slender Creeping Red Fescue,
20% Sarolea Slender Creeping Red Fescue

PM50 - QUALITY LAWN

HIGH QUALITY HARD WEARING LAWN
Sowing rate: 35-50g/m²
Overseeding: 15-25g/m²
% Cultivar Species:
10% Tetragame 4turf[®] Tetraploid Perennial Rye,
20% Chardin Perennial Rye,
10% Dickens Perennial Rye,
40% Sergei Strong Creeping Red Fescue,
10% Wagner Chewings Fescue,
10% Smirna Slender Creeping Red Fescue

PM65 - GALLOP

RACE COURSES & POLO GROUNDS
Sowing rate: 35-50g/m²
Overseeding: 25-50g/m²
Mowing height: 75-100mm
% Cultivar Species:
30% Tetragame 4turf[®] Tetraploid Perennial Rye,
25% Columbine Perennial Rye,
25% Gladys Perennial Rye,
20% Dakisha Smooth Stalked Meadow Grass

PM81 - PREMIER RENOVATION

SPORTS FIELD RENOVATION
Sowing rate: 35-75g/m²
Overseeding: 25-75g/m²
Mowing height: down to 25mm
% Cultivar Species:
10% Tetragame 4turf[®] Tetraploid Perennial Rye,
10% Fabian Perennial Ryegrass,
20% Eurodiamond Perennial Ryegrass,
20% Alathae Perennial Ryegrass,
20% Gildara Perennial Ryegrass,
20% Columbine Perennial Ryegrass

PM95 - WITH RYE

LAND RECLAMATION, INFERTILE, DROUGHT, ACID TO ALKALINE
Sowing rate: 10-25g/m² Overseeding: 10g/m²
Mowing height: versatile, light grazing or mow as required down to 75mm
% Cultivar Species:
30% Double 4turf[®] Tetraploid Perennial Ryegrass,
25% Smirna Slender Creeping Red Fescue,
20% Dumas Hard Fescue,
10% Crested Dogtail, 10% Highland Browntop Bent,
2.5% Small Leaved White Clover, 2.5% Birdsfoot Trefoil

GAME & POULTRY REARING EQUIPMENT

Trust RC crops to supply reliable rearing equipment for your game birds or poultry.

FEEDERS



6KG BLENHEIM FEEDER

Durable mid sized feeder suited for domestic and smallholder markets.

- Suitable for most breeds of poultry & smaller breeds of waterfowl.
- Available in outdoor and indoor versions
- Suited to all types of feed including pellets, wheat, corn and mash.
- Anti-scratch fins - reduces feed waste and feed contamination.
- Simple twist and lock design allows for easy filling and cleaning.
- Indoor can be hung or floor standing and can be raised 5.8cm off the ground with our standard conical feet.
- Outdoor version comes with rain hat, feed remains dry and fresh.

Specification:

- Base Diameter: 30cm • Height: 35cm • Capacity: 6Kg,
- Pack size: 10 units • Birds: 6-8



25KG KING FEEDER OUTDOOR

Gold standard high capacity stand alone feeder

- Manufactured in the UK from high quality recycled plastics.
- Suited for game birds, poultry, turkeys and waterfowl.
- Assembly is corrosion free with a fully adjustable feed rate.
- Also available in clear plastic, for easy feed level monitoring.

Specification:

- Base Diameter: 46.5cm • Rain Hat Diameter: 63cm
- Height: 46-57cm (dependant on feed flow setting) • Capacity: 25Kg
- Pack size: 10 units • Birds: 20-25



12KG ECO FEEDER

Suitable for in or outdoor use. Ideal for keepers who have a larger flock.

- The Eco Feeder is comprised of a feed tray, feed tube and an indoor lid.
- Two versions. Eco Deluxe with built in anti-scratch fins, to reduce feed waste and feed contamination. The standard has no anti-scratch fins.
- Outdoor version can be fitted with an additional rain hat, ensuring feed remains dry and fresh.

Specification:

- Base Diameter: 40cm • Height: 46cm • Capacity: 12Kg
- Pack size: 10 units • Birds: 10-12



25KG KING FEEDER INDOOR

Gold standard high capacity stand alone feeder

- Manufactured in the UK from high quality recycled plastics.
- Floor standing or hanging feeder.
- Assembly is corrosion free with a fully adjustable feed rate.
- Lid to prevent perching and fouling of the feed.
- Suited for game birds, poultry, turkeys and waterfowl.

Specification:

- Base Diameter: 46.5cm • Capacity: 25Kg • Pack size: 10 units
- Height: 47.5 - 58.5cm (dependant on feed flow setting) • Birds: 20-25



12KG HANDY FEEDER

A very durable feeder made from high quality plastic.

- Comprised of a feed tray, feed tube, feed flow adjuster, ergonomic handle and an indoor lid.
- Ideal for both indoor and outdoor use
- Free standing or as a hanging feeder.
- Can be fitted with a fully weather proof rain hat.

Specification:

- Base Diameter: 40cm • Height: 46cm • Capacity: 12Kg
- Pack size: 10 units • Birds: 10-12



70 LITRE EMPEROR FEEDER

Gold standard high capacity stand alone feeder

- Made from a durable recycled plastic.
- Feed flows smoothly without clogging
- Uses a unique rainwater capture system.
- Feed dispenser is made from robust Glass Filled Nylon 6.
- Resistant to badger attack and UV damage.
- Suitable for use in pens, open woodland and moorland locations.

Specification:

- Diameter: 68cm • Height: 95cm • Capacity: 70L/50Kg



WM2e Automatic Drinker
With a Biomaster Guard



DRINKERS

OTHER PRODUCTS



RC 75 AUTOMATIC DRINKER

- Utilises the proven and reliable RC Drinker Valve system.
- Designed to be used from a separate header tank and is gravity fed.
- Water level in the drinker tray is adjustable.
- Comes with 3m of black tubing, saddle assembly, hanger strap, nylon or plastic covered hanging cord, a slider for height adjustment.
- Valve includes a removable filter for cleaning.
- Very easy to use and clean, spares readily available.
- Suitable for Poultry and Game Birds.
- Biomaster Guard (sold separately) prevents contamination.

Specification:

- Bowl diameter: 21cm • Capacity: Auto • Pack Size: 20 units
- Height: 19.5cm (cone only), 45cm (cone, valve & hanger strap)



WM2 AUTOMATIC DRINKER

- Utilises the proven and reliable Drinker Valve system.
- Designed to be used from a separate header tank and is gravity fed.
- Water level in the drinker tray is adjustable.
- Comes with 3m of black tubing, saddle assembly, hanger strap, nylon or plastic covered hanging cord, a slider for height adjustment.
- Valve includes a removable filter for cleaning.
- Very easy to use and clean, spares readily available.
- Suitable for Poultry and Game Birds.

Specification:

- Bowl diameter: 32cm • Capacity: Auto • Pack Size: 20 units
- Height: 28cm (cone only), 53.5cm (cone, valve & hanger strap)



WM3 AUTOMATIC DRINKER

- Utilises the proven and reliable Drinker Valve system.
- Ideal for larger birds such as turkeys
- Supplied with a ballast bowl for extra stability.
- Designed to be used from a separate header tank and is gravity fed.
- Water level in the drinker tray is adjustable.
- Comes with 3m of black tubing, saddle assembly, hanger strap, nylon or plastic covered hanging cord, a slider for height adjustment.
- Valve includes a removable filter for cleaning.
- Very easy to use and clean, spares readily available.
- Suitable for Poultry and Game Birds.

Specification:

- Bowl diameter: 38cm • Capacity: Auto • Pack Size: 10 units
- Height: 34cm (cone only), 58cm (cone, valve & hanger strap)



TRIPOD DRINKERS

- Manufactured using UV stabilised polypropylene and polyethylene
- Designed to cope with the toughest conditions.
- Solid tripod base, light but durable body with a heavy duty carrying handle, designed to cope with filling and moving the body.
- High capacity water pan, easily accessible to various kinds of birds including all sizes of poultry, game birds, ducks, geese and turkeys.
- Water barrels are made of translucent plastic for easy monitoring.
- Tripod drinkers are stable and operate on uneven ground, although it is always best to try and keep them on a level surface!

Specification:

- Base diameter: 42cm • Capacity: 10, 20 & 30L
- Height: 50cm (10L), 61cm (20L), 70cm (30L) • Pack Size: 1 unit



3 LITRE COMBO DRINKER

A high quality, gravity fed, ground based or hanging Drinker.

- Heavy duty, ergonomical carrying handle, doubles as a hanger.
- Twist lock fit base allows you to fill the drinker, once filled simply twist and lock the base into position.
- Very easy to use and clean.
- Suitable for Poultry and Game Birds.

Specification:

- Base Diameter: 25cm • Height: 23cm • Capacity: 3L
- Pack Size: 10 units



7 LITRE COMBO DRINKER

A high quality, gravity fed, ground based or hanging Drinker.

- Heavy duty, ergonomical carrying handle, doubles as a hanger.
- Comes with a set of push fit legs raising the reservoir 55 mm above the ground, reducing water contamination.
- Twist lock fit base allows you to fill the drinker, once filled simply twist and lock the base into position.
- Very easy to use and clean.
- Suitable for Poultry and Game Birds.

Specification:

- Base Diameter: 36.5cm • Height: 27cm, 32.5cm (with legs fitted)
- Capacity: 7L • Pack Size: 10 units



12 LITRE COMBO DRINKER

A high quality, gravity fed, ground based or hanging Drinker.

- Heavy duty, ergonomical carrying handle, doubles as a hanger.
- Comes with a set of push fit legs raising the reservoir 55 mm above the ground, reducing water contamination.
- Twist lock fit base allows you to fill the drinker, once filled simply twist and lock the base into position.
- Very easy to use and clean.
- Suitable for Poultry and Game Birds.

Specification:

- Base Diameter: 36.5cm • Height: 40.5cm, 46cm (with legs fitted)
- Capacity: 12L • Pack Size: 10 units



40CM CHICK TRAY

- The BEC Chick Tray is recommended for use with up to 100 poultry chicks per tray.



RAIN HAT FOR 6KG BLENHEIM FEEDER

- Rain Hat for 6kg Blenheim Feeder can be retro fitted.



RAIN HAT FOR ECO AND HANDY FEEDERS

- The Rain Hat for the RC Eco and RC Handy feeders can also be retro fitted to a number of existing feeders.



RAIN HAT FOR KING FEEDER

- This rain hat provides the King Feeder with protection from the elements and reduces possible contamination of feed.
- Can be used in the most challenging conditions and outdoor environments, as it offers good all round weather protection.

Specification:

- Diameter: 48cm • Height: 46cm • Pack Size: 10 units



DRINKER AND FEEDER STAND

- Designed to lift all drinkers and feeders up out of the litter and provides a cleaner area around high traffic feeding/drinking stations.
- Providing your birds with cleaner drinking water.
- Stops your birds standing on, and feeding from wet bedding, a source of many diseases.

Specification:

- Diameter: 52cm • Height: 7cm • Pack Size: 10 units



SPIRAL FEEDER

- A basic and easy way to feed your birds – they simply fill up with feed from the container above and the birds peck at the grain in the spring.
- The spiral feeder fits directly in to the base of any drum, bucket or container you have at hand. Fitting is easy – simply drill a 4 cm diameter hole in the base of the drum or bucket and drop in the spiral feeder – no further fixings required.



WRIGHT FEEDER

- The plastic coated metal Wright Feeder can be dropped into a pre-drilled hole in the base of any bulk feed container.



FEED DISPENSER NOZZLE

- 150mm Feed Dispenser Nozzle
- Manufactured from 35% Glass Filled Nylon to resist badger attacks.
- Circumference drainage for both dust and water.
- Reverse lip diameter so feed is more readily retained in use.
- Cone shaped feed to prevent the jamming
- Comes with 4 easy fitting anchor screws.



LARGE FEED DISPENSER

- Originally custom designed for the Emperor Feeder, but can also be fitted to any suitable container for use as a game or poultry feeder.
- Anti-flick ring to reduce feed waste is available as an optional extra, these can be retro fitted to any large feed pan.
- Vertical fins in the pan help to reduce flicking out of feed. Also divide the pan into distinct feeding sections, overcoming problems with protective cock birds who can defend the feeder area from other users.
- Drain slit to allow dust or rainwater to run out, reducing cleaning.
- Cone shaped body for a smooth flow of feed, preventing clogging.
- Supplied with four heavy duty anchor screws for fitting.



BIOMASTER GUARD

- Key tool in the fight against disease contamination from wild birds.
- Provides protection from contaminants such as dust, dirt and faeces from entering automatic drinking systems.
- Prevents water dilution in wet weather.
- Protects drinking water from sunlight, keeping the water cleaner and cooler. Sunlight can significantly increase bacterial growth.
- Greatly improves the efficiency of medicated water by providing protection from UV light which destroys the active ingredients.
- Helps to protect birds all year round.

Specification:

- Diameter: 45cm (WM2) • Diameter: 34cm (BEC 75)
- Height: 20cm (WM2) • Height: 13.5cm (BEC 75)
- Pack size: 10 units



TRI STAND 80CM

- Fitted with a spike on each leg to secure in place, for extra stability legs can be pegged into the ground.
- Light weight and fold together for easy transport.
- 80cm Tri-Stand is perfect for the WM2e and RC 75 drinkers, but it is suitable for most drinkers and feeders.
- Each Tri-Stand comes with 1m of hanging cord and a plastic slider for easy height adjustment of drinker/feeder.

Specification:

- Height: 80cm/100cm/150cm • Pack Size: 10 units

MERCHANDISE



RC CROPS POLO

Sizes Available:

S,
M,
L,
XL,
XXL



RC CROPS HOODIE

Sizes Available:

XS,
S,
M,
L,
XL,
XXL



RC CROPS SEELAND JACKET

Sizes Available:

Male: M, L, XL, XXL, XXXL



RC CROPS HAT

Sizes Available:

Single Size



RC CROPS PREMIUM HAT

Crafted from a luxury suede.

Sizes Available:

One Size Fits All



RC CROPS PREMIUM HAT - DARK GREEN

Crafted from a luxury suede.

Sizes Available:

One Size Fits All



RC CROPS PREMIUM HAT - BLUE

Crafted from a luxury suede.

Sizes Available:

One Size Fits All





CONTACT US

01327 221 222 / 07947 954 614

www.rccrops.co.uk

enquiries@rccrops.co.uk

Stoneton Moat Farm
Priors Hardwick
Southam
Warwickshire
CV47 7SR